

## Product datasheet for **TA362860**

### Cfp Rabbit Polyclonal Antibody

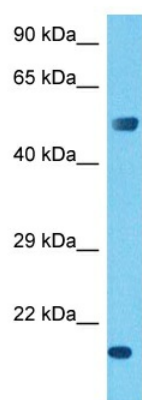
#### Product data:

Product Type:	Primary Antibodies
Applications:	WB
Reactivity:	Mouse
Host:	Rabbit
Clonality:	Polyclonal
Immunogen:	The immunogen is a synthetic peptide directed towards the C terminal region of mouse CFP
Specificity:	<b>Expected reactivity:</b> Mouse
Formulation:	Liquid. Purified antibody supplied in 1x PBS buffer with 0.09% (w/v) sodium azide and 2% sucrose. <i>Note that this product is shipped as lyophilized powder to China customers.</i>
Concentration:	lot specific
Purification:	Affinity purified
Conjugation:	Unconjugated
Storage:	For short term use, store at 2-8°C up to 1 week. For long term storage, store at -20°C in small aliquots to prevent freeze-thaw cycles.
Stability:	Shelf life: one year from despatch.
Predicted Protein Size:	51 kDa
Gene Name:	complement factor properdin
Database Link:	<a href="#">NP_032849.2</a> <a href="#">Entrez Gene 18636 Mouse</a> <a href="#">P11680</a>
Background:	A positive regulator of the alternate pathway of complement. It binds to and stabilizes the C3- and C5-convertase enzyme complexes.
Synonyms:	BFD; PFC; PFD; PROPERDIN



[View online »](#)

## Product images:



Host: Rabbit  
Target Name: Cfp  
Sample Type: Mouse Spleen Lysate  
Antibody Dilution: 1.0 $\mu$ g/ml

Host: Rabbit  
Target Name: CFP  
Sample Tissue: Mouse Spleen lysates  
Antibody Dilution: 1 $\mu$ g/ml