

Product datasheet for **TA362854**

TFIP11 Rabbit Polyclonal Antibody

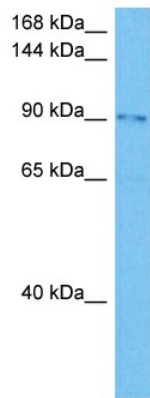
Product data:

Product Type:	Primary Antibodies
Applications:	WB
Reactivity:	Human
Host:	Rabbit
Clonality:	Polyclonal
Immunogen:	The immunogen is a synthetic peptide directed towards the N terminal region of human TFIP11
Specificity:	Expected reactivity: Human
Formulation:	Liquid. Purified antibody supplied in 1x PBS buffer with 0.09% (w/v) sodium azide and 2% sucrose.
Concentration:	lot specific
Purification:	Affinity purified
Conjugation:	Unconjugated
Storage:	For short term use, store at 2-8°C up to 1 week. For long term storage, store at -20°C in small aliquots to prevent freeze-thaw cycles.
Stability:	Shelf life: one year from despatch.
Predicted Protein Size:	92 kDa
Gene Name:	tuftelin interacting protein 11
Database Link:	NP_001008697.1 Entrez Gene 24144 Human Q9UBB9
Background:	TFIP11 is a nuclear speckle-localized protein that may play a role in spliceosome disassembly in Cajal bodies (Stanek et al., 2008 [PubMed 18367544]).[supplied by OMIM, Apr 2009]
Synonyms:	bK445C9.6; DKFZP434B194; FLJ22086; hNtr1; NTR1; OTTHUMP00000198650; OTTHUMP00000198850; OTTHUMP00000198851; OTTHUMP00000198852; STIP; STIP-1; TIP39



[View online »](#)

Product images:



Host: Rabbit
Target Name: TFIP11
Sample Type: HepG2 Cell Lysate
Antibody Dilution: 1.0 μ g/ml

Host: Rabbit
Target Name: TFIP11
Sample Tissue: Human HepG2 Whole Cell lysates
Antibody Dilution: 1 μ g/ml