

Product datasheet for **TA362853**

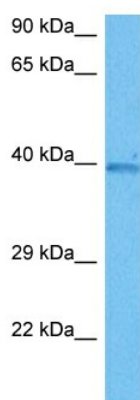
STK19 Rabbit Polyclonal Antibody

Product data:

Product Type:	Primary Antibodies
Applications:	WB
Reactivity:	Human
Host:	Rabbit
Clonality:	Polyclonal
Immunogen:	The immunogen is a synthetic peptide directed towards the N region of human STK19
Specificity:	Expected reactivity: Human
Formulation:	Liquid. Purified antibody supplied in 1x PBS buffer with 0.09% (w/v) sodium azide and 2% sucrose. <i>Note that this product is shipped as lyophilized powder to China customers.</i>
Concentration:	lot specific
Purification:	Affinity purified
Conjugation:	Unconjugated
Storage:	For short term use, store at 2-8°C up to 1 week. For long term storage, store at -20°C in small aliquots to prevent freeze-thaw cycles.
Stability:	Shelf life: one year from despatch.
Predicted Protein Size:	40 kDa
Gene Name:	serine/threonine kinase 19
Database Link:	NP_004188.1 Entrez Gene 8859 Human P49842
Background:	This gene encodes a serine/threonine kinase which localizes predominantly to the nucleus. Its specific function is unknown; it is possible that phosphorylation of this protein is involved in transcriptional regulation. This gene localizes to the major histocompatibility complex (MHC) class III region on chromosome 6 and expresses two transcript variants.
Synonyms:	D6S60; D6S60E; G11; HLA-RP1; MGC117388; RP1
Protein Families:	Druggable Genome, Protein Kinase



[View online »](#)

Product images:

Host: Rabbit
Target Name: STK19
Sample Type: 293T Cell Lysate
Antibody Dilution: 1.0 μ g/ml

Host: Rabbit
Target Name: STK19
Sample Tissue: Human 293T Whole Cell lysates
Antibody Dilution: 1 μ g/ml