

## Product datasheet for **TA362852**

### LIMS2 Rabbit Polyclonal Antibody

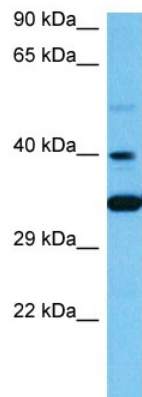
#### Product data:

Product Type:	Primary Antibodies
Applications:	WB
Reactivity:	Human
Host:	Rabbit
Clonality:	Polyclonal
Immunogen:	The immunogen is a synthetic peptide directed towards the middle region of human LIMS2
Specificity:	<b>Expected reactivity:</b> Human
Formulation:	Liquid. Purified antibody supplied in 1x PBS buffer with 0.09% (w/v) sodium azide and 2% sucrose. <i>Note that this product is shipped as lyophilized powder to China customers.</i>
Concentration:	lot specific
Purification:	Affinity purified
Conjugation:	Unconjugated
Storage:	For short term use, store at 2-8°C up to 1 week. For long term storage, store at -20°C in small aliquots to prevent freeze-thaw cycles.
Stability:	Shelf life: one year from despatch.
Predicted Protein Size:	37 kDa
Gene Name:	LIM zinc finger domain containing 2
Database Link:	<a href="#">NP_001129509.2</a> <a href="#">Entrez Gene 55679 Human</a> <a href="#">Q7Z4I7</a>
Background:	This gene encodes a member of a small family of focal adhesion proteins which interacts with ILK (integrin-linked kinase), a protein which effects protein-protein interactions with the extracellular matrix. The encoded protein has five LIM domains, each domain forming two zinc fingers, which permit interactions which regulate cell shape and migration. A pseudogene of this gene is located on chromosome 4. Multiple transcript variants encoding different isoforms have been found for this gene.



[View online »](#)

**Synonyms:** FLJ10044; OTTHUMP00000203848; OTTHUMP00000203850; OTTHUMP00000203866; PINCH-2; PINCH2

**Product images:**

Host: Rabbit  
Target Name: LIMS2  
Sample Type: ACHN Cell Lysate  
Antibody Dilution: 1.0µg/ml

Host: Rabbit  
Target Name: LIMS2  
Sample Tissue: Human ACHN Whole Cell lysates  
Antibody Dilution: 1ug/ml