

Product datasheet for **TA362848**

TBLR1 (TBL1XR1) Rabbit Polyclonal Antibody

Product data:

Product Type:	Primary Antibodies
Applications:	WB
Reactivity:	Human
Host:	Rabbit
Clonality:	Polyclonal
Immunogen:	The immunogen is a synthetic peptide directed towards the middle region of human TBL1XR1
Specificity:	Expected reactivity: Human
Formulation:	Liquid. Purified antibody supplied in 1x PBS buffer with 0.09% (w/v) sodium azide and 2% sucrose. <i>Note that this product is shipped as lyophilized powder to China customers.</i>
Concentration:	lot specific
Purification:	Affinity purified
Conjugation:	Unconjugated
Storage:	For short term use, store at 2-8°C up to 1 week. For long term storage, store at -20°C in small aliquots to prevent freeze-thaw cycles.
Stability:	Shelf life: one year from despatch.
Predicted Protein Size:	56 kDa
Gene Name:	transducin (beta)-like 1 X-linked receptor 1
Database Link:	NP_001308122.1 Entrez Gene 79718 Human Q9BZK7



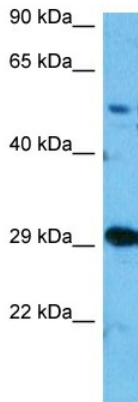
[View online »](#)

Background:

This gene is a member of the WD40 repeat-containing gene family and shares sequence similarity with transducin (beta)-like 1X-linked (TBL1X). The protein encoded by this gene is thought to be a component of both nuclear receptor corepressor (N-CoR) and histone deacetylase 3 (HDAC 3) complexes, and is required for transcriptional activation by a variety of transcription factors. Mutations in these gene have been associated with some autism spectrum disorders, and one finding suggests that haploinsufficiency of this gene may be a cause of intellectual disability with dysmorphism. Mutations in this gene as well as recurrent translocations involving this gene have also been observed in some tumors.

Synonyms:

C21; DC42; IRA1; TBLR1

Product images:

Host: Rabbit
Target Name: TBL1XR1
Sample Type: Mesenchymoma Tumor Lysate
Antibody Dilution: 1.0µg/ml

Host: Rabbit
Target Name: TBL1XR1
Sample Tissue: Human Mesenchymoma Tumor lysates
Antibody Dilution: 1ug/ml