

Product datasheet for **TA362847**

EIF5A2 Rabbit Polyclonal Antibody

Product data:

Product Type:	Primary Antibodies
Applications:	WB
Reactivity:	Human
Host:	Rabbit
Clonality:	Polyclonal
Immunogen:	The immunogen is a synthetic peptide directed towards the middle terminal region of human EIF5A2
Specificity:	Expected reactivity: Human
Formulation:	Liquid. Purified antibody supplied in 1x PBS buffer with 0.09% (w/v) sodium azide and 2% sucrose. <i>Note that this product is shipped as lyophilized powder to China customers.</i>
Concentration:	lot specific
Purification:	Affinity purified
Conjugation:	Unconjugated
Storage:	For short term use, store at 2-8°C up to 1 week. For long term storage, store at -20°C in small aliquots to prevent freeze-thaw cycles.
Stability:	Shelf life: one year from despatch.
Predicted Protein Size:	17 kDa
Gene Name:	eukaryotic translation initiation factor 5A2
Database Link:	NP_065123.1 Entrez Gene 56648 Human Q9GZV4



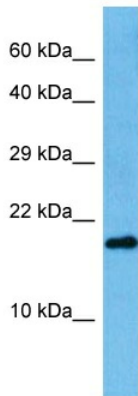
[View online »](#)

Background:

mRNA-binding protein involved in translation elongation. Has an important function at the level of mRNA turnover, probably acting downstream of decapping. Involved in actin dynamics and cell cycle progression, mRNA decay and probably in a pathway involved in stress response and maintenance of cell wall integrity. Functions as a regulator of apoptosis. Mediates effects of polyamines on neuronal process extension and survival. May play an important role in brain development and function, and in skeletal muscle stem cell differentiation (By similarity).

Synonyms:

eIF-5A-2; eIF-5A2; eIF5AII

Product images:

Host: Rabbit
Target Name: EIF5A2
Sample Type: HepG2 Cell Lysate
Antibody Dilution: 1.0 μ g/ml

Host: Rabbit
Target Name: EIF5A2
Sample Tissue: Human HepG2 Whole Cell lysates
Antibody Dilution: 1 μ g/ml