

Product datasheet for **TA362845**

APLF Rabbit Polyclonal Antibody

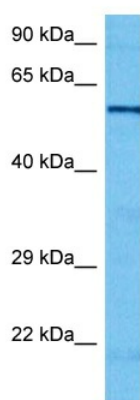
Product data:

Product Type:	Primary Antibodies
Applications:	WB
Reactivity:	Human
Host:	Rabbit
Clonality:	Polyclonal
Immunogen:	The immunogen is a synthetic peptide directed towards the C terminal region of human APLF
Specificity:	Expected reactivity: Human
Formulation:	Liquid. Purified antibody supplied in 1x PBS buffer with 0.09% (w/v) sodium azide and 2% sucrose. <i>Note that this product is shipped as lyophilized powder to China customers.</i>
Concentration:	lot specific
Purification:	Affinity purified
Conjugation:	Unconjugated
Storage:	For short term use, store at 2-8°C up to 1 week. For long term storage, store at -20°C in small aliquots to prevent freeze-thaw cycles.
Stability:	Shelf life: one year from despatch.
Predicted Protein Size:	56 kDa
Gene Name:	aprataxin and PNKP like factor
Database Link:	NP_775816.1 Entrez Gene 200558 Human Q8IW19
Background:	C2ORF13 is a component of the cellular response to chromosomal DNA single- and double-strand breaks.
Synonyms:	APFL; C2orf13; FLJ16593; MGC47799; PALF; XIP1



[View online »](#)

Product images:



Host: Rabbit
Target Name: APLF
Sample Type: LN18 Cell Lysate
Antibody Dilution: 1.0 μ g/ml

Host: Rabbit
Target Name: APLF
Sample Tissue: Human LN18 Whole Cell lysates
Antibody Dilution: 1 μ g/ml