

Product datasheet for **TA362843**

IRAG1 Rabbit Polyclonal Antibody

Product data:

Product Type:	Primary Antibodies
Applications:	WB
Reactivity:	Human
Host:	Rabbit
Clonality:	Polyclonal
Immunogen:	The immunogen is a synthetic peptide directed towards the middle region of human MRV11
Specificity:	Expected reactivity: Human
Formulation:	Liquid. Purified antibody supplied in 1x PBS buffer with 0.09% (w/v) sodium azide and 2% sucrose. <i>Note that this product is shipped as lyophilized powder to China customers.</i>
Concentration:	lot specific
Purification:	Affinity purified
Conjugation:	Unconjugated
Storage:	For short term use, store at 2-8°C up to 1 week. For long term storage, store at -20°C in small aliquots to prevent freeze-thaw cycles.
Stability:	Shelf life: one year from despatch.
Predicted Protein Size:	97 kDa
Gene Name:	murine retrovirus integration site 1 homolog
Database Link:	NP_001092049.2 Entrez Gene 10335 Human Q9Y6F6



[View online »](#)

Background:

This gene is similar to a putative mouse tumor suppressor gene (Mrvi1) that is frequently disrupted by mouse AIDS-related virus (MRV). The encoded protein, which is found in the membrane of the endoplasmic reticulum, is similar to Jaw1, a lymphoid-restricted protein whose expression is down-regulated during lymphoid differentiation. This protein is a substrate of cGMP-dependent kinase-1 (PKG1) that can function as a regulator of IP3-induced calcium release. Studies in mouse suggest that MRV integration at Mrvi1 induces myeloid leukemia by altering the expression of a gene important for myeloid cell growth and/or differentiation, and thus this gene may function as a myeloid leukemia tumor suppressor gene. Several alternatively spliced transcript variants encoding different isoforms have been found for this gene, and alternative translation start sites, including a non-AUG (CUG) start site, are used.

Synonyms:

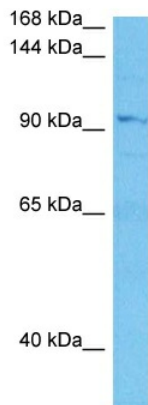
IRAG; JAW1L

Protein Families:

Transmembrane

Protein Pathways:

Vascular smooth muscle contraction

Product images:


Host: Rabbit
 Target Name: MRV11
 Sample Type: Mesenchymoma Tumor Lysate
 Antibody Dilution: 1.0µg/ml

Host: Rabbit
 Target Name: MRV11
 Sample Tissue: Human Mesenchymoma Tumor lysates
 Antibody Dilution: 1ug/ml