

Product datasheet for **TA362836**

SALL2 Rabbit Polyclonal Antibody

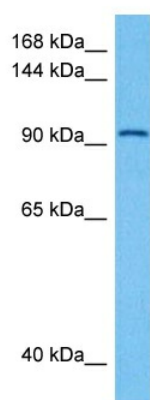
Product data:

Product Type:	Primary Antibodies
Applications:	WB
Reactivity:	Human
Host:	Rabbit
Clonality:	Polyclonal
Immunogen:	The immunogen is a synthetic peptide directed towards the middle region of human SALL2
Specificity:	Expected reactivity: Human
Formulation:	Liquid. Purified antibody supplied in 1x PBS buffer with 0.09% (w/v) sodium azide and 2% sucrose. <i>Note that this product is shipped as lyophilized powder to China customers.</i>
Concentration:	lot specific
Purification:	Affinity purified
Conjugation:	Unconjugated
Storage:	For short term use, store at 2-8°C up to 1 week. For long term storage, store at -20°C in small aliquots to prevent freeze-thaw cycles.
Stability:	Shelf life: one year from despatch.
Predicted Protein Size:	105 kDa
Gene Name:	spalt like transcription factor 2
Database Link:	NP_001278375.1 Entrez Gene 6297 Human Q9Y467
Background:	This gene encodes a protein containing multiple zinc finger domains. The encoded protein functions in optical fissure closure during development of the eye in the embryo. Mutations in this gene are associated with ocular coloboma.
Synonyms:	FLJ10414; FLJ55746; HSAL2; KIAA0360; p150(Sal2); SAL2; ZNF795
Protein Families:	Druggable Genome



[View online »](#)

Product images:



Host: Rabbit
Target Name: SALL2
Sample Type: MCF7 Cell Lysate
Antibody Dilution: 1.0 μ g/ml

Host: Rabbit
Target Name: SALL2
Sample Tissue: Human MCF7 Whole Cell lysates
Antibody Dilution: 1 μ g/ml