

Product datasheet for **TA362829**

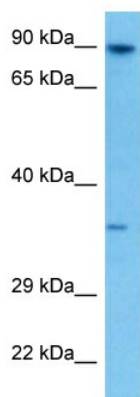
SNRK Rabbit Polyclonal Antibody

Product data:

Product Type:	Primary Antibodies
Applications:	WB
Reactivity:	Human
Host:	Rabbit
Clonality:	Polyclonal
Immunogen:	The immunogen is a synthetic peptide directed towards the middle region of human SNRK
Specificity:	Expected reactivity: Human
Formulation:	Liquid. Purified antibody supplied in 1x PBS buffer with 0.09% (w/v) sodium azide and 2% sucrose. <i>Note that this product is shipped as lyophilized powder to China customers.</i>
Concentration:	lot specific
Purification:	Affinity purified
Conjugation:	Unconjugated
Storage:	For short term use, store at 2-8°C up to 1 week. For long term storage, store at -20°C in small aliquots to prevent freeze-thaw cycles.
Stability:	Shelf life: one year from despatch.
Predicted Protein Size:	84 kDa
Gene Name:	SNF related kinase
Database Link:	NP_001094064.1 Entrez Gene 54861 Human Q9NRH2
Background:	SNRK is a member of the sucrose nonfermenting (SNF)-related kinase family of serine/threonine kinases.
Synonyms:	DKFZp779A1866; FLJ20224; HSNFRK; KIAA0096; OTTHUMP00000209954; SNFRK
Protein Families:	Druggable Genome, Protein Kinase



[View online »](#)

Product images:

Host: Rabbit
Target Name: SNRK
Sample Type: PC-3 Cell Lysate
Antibody Dilution: 1.0 μ g/ml

Host: Rabbit
Target Name: SNRK
Sample Tissue: Human PC-3 Whole Cell lysates
Antibody Dilution: 1 μ g/ml