

Product datasheet for **TA362828**

MED8 Rabbit Polyclonal Antibody

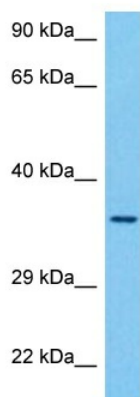
Product data:

Product Type:	Primary Antibodies
Applications:	WB
Reactivity:	Human
Host:	Rabbit
Clonality:	Polyclonal
Immunogen:	The immunogen is a synthetic peptide directed towards the middle region of human MED8
Specificity:	Expected reactivity: Human
Formulation:	Liquid. Purified antibody supplied in 1x PBS buffer with 0.09% (w/v) sodium azide and 2% sucrose. <i>Note that this product is shipped as lyophilized powder to China customers.</i>
Concentration:	lot specific
Purification:	Affinity purified
Conjugation:	Unconjugated
Storage:	For short term use, store at 2-8°C up to 1 week. For long term storage, store at -20°C in small aliquots to prevent freeze-thaw cycles.
Stability:	Shelf life: one year from despatch.
Predicted Protein Size:	33 kDa
Gene Name:	mediator complex subunit 8
Database Link:	NP_001001653.1 Entrez Gene 112950 Human Q96G25-2
Background:	This gene encodes a protein component of the mediator complex, which aids in transcriptional activation through interaction with RNA polymerase II and gene-specific transcription factors. The encoded protein may also function in ubiquitin ligation and protein degradation. Alternatively spliced transcript variants encoding multiple isoforms have been observed for this gene.
Synonyms:	ARC32; MGC17544; MGC19641



[View online »](#)

Product images:



Host: Rabbit
Target Name: MED8
Sample Type: LN18 Cell Lysate
Antibody Dilution: 1.0 μ g/ml

Host: Rabbit
Target Name: MED8
Sample Tissue: Human LN18 Whole Cell lysates
Antibody Dilution: 1 ug/ml