

Product datasheet for **TA362821**

TRF1 (TERF1) Rabbit Polyclonal Antibody

Product data:

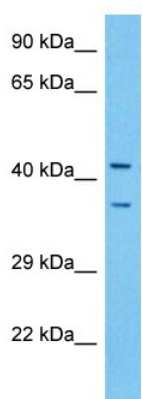
Product Type:	Primary Antibodies
Applications:	WB
Reactivity:	Human
Host:	Rabbit
Clonality:	Polyclonal
Immunogen:	The immunogen is a synthetic peptide directed towards the middle region of human TERF1
Specificity:	Expected reactivity: Human
Formulation:	Liquid. Purified antibody supplied in 1x PBS buffer with 0.09% (w/v) sodium azide and 2% sucrose. <i>Note that this product is shipped as lyophilized powder to China customers.</i>
Concentration:	lot specific
Purification:	Affinity purified
Conjugation:	Unconjugated
Storage:	For short term use, store at 2-8°C up to 1 week. For long term storage, store at -20°C in small aliquots to prevent freeze-thaw cycles.
Stability:	Shelf life: one year from despatch.
Predicted Protein Size:	46 kDa
Gene Name:	telomeric repeat binding factor 1
Database Link:	NP_003209.2 Entrez Gene 7013 Human P54274-2
Background:	This gene encodes a telomere specific protein which is a component of the telomere nucleoprotein complex. This protein is present at telomeres throughout the cell cycle and functions as an inhibitor of telomerase, acting in cis to limit the elongation of individual chromosome ends. The protein structure contains a C-terminal Myb motif, a dimerization domain near its N-terminus and an acidic N-terminus. Two transcripts of this gene are alternatively spliced products.
Synonyms:	MGC109063; Pin2; Trbf1; Trf1



[View online »](#)

Protein Families: Transcription Factors

Product images:



Host: Rabbit
Target Name: TERF1
Sample Type: ACHN Cell Lysate
Antibody Dilution: 1.0µg/ml

Host: Rabbit
Target Name: TERF1
Sample Tissue: Human ACHN Whole Cell lysates
Antibody Dilution: 1ug/ml