

## Product datasheet for **TA362815**

### DYRK2 Rabbit Polyclonal Antibody

#### Product data:

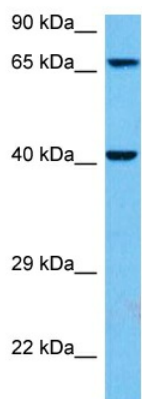
Product Type:	Primary Antibodies
Applications:	WB
Reactivity:	Human
Host:	Rabbit
Clonality:	Polyclonal
Immunogen:	The immunogen is a synthetic peptide directed towards the middle region of human DYRK2
Specificity:	<b>Expected reactivity:</b> Human
Formulation:	Liquid. Purified antibody supplied in 1x PBS buffer with 0.09% (w/v) sodium azide and 2% sucrose. <i>Note that this product is shipped as lyophilized powder to China customers.</i>
Concentration:	lot specific
Purification:	Affinity purified
Conjugation:	Unconjugated
Storage:	For short term use, store at 2-8°C up to 1 week. For long term storage, store at -20°C in small aliquots to prevent freeze-thaw cycles.
Stability:	Shelf life: one year from despatch.
Predicted Protein Size:	66 kDa
Gene Name:	dual specificity tyrosine phosphorylation regulated kinase 2
Database Link:	<a href="#">NP_003574.1</a> <a href="#">Entrez Gene 8445 Human</a> <a href="#">Q92630</a>
Background:	DYRK2 belongs to a family of protein kinases whose members are presumed to be involved in cellular growth and/or development. The family is defined by structural similarity of their kinase domains and their capability to autophosphorylate on tyrosine residues. DYRK2 has demonstrated tyrosine autophosphorylation and catalyzed phosphorylation of histones H3 and H2B in vitro. Two isoforms of DYRK2 have been isolated. The predominant isoform, isoform 1, lacks a 5' terminal insert.
Synonyms:	FLJ21217; FLJ21365



[View online »](#)

Protein Families: Druggable Genome, Protein Kinase

### Product images:



Host: Rabbit  
Target Name: DYRK2  
Sample Type: HCT116 Cell Lysate  
Antibody Dilution: 1.0 $\mu$ g/ml

Host: Rabbit  
Target Name: DYRK2  
Sample Tissue: Human HCT116 Whole Cell lysates  
Antibody Dilution: 1 $\mu$ g/ml