

Product datasheet for **TA362811**

DBPA (YBX3) Rabbit Polyclonal Antibody

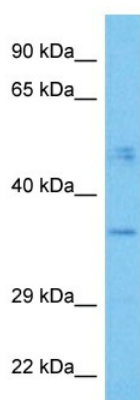
Product data:

Product Type:	Primary Antibodies
Applications:	WB
Reactivity:	Human
Host:	Rabbit
Clonality:	Polyclonal
Immunogen:	The immunogen is a synthetic peptide directed towards the middle region of human CSDA
Specificity:	Expected reactivity: Human
Formulation:	Liquid. Purified antibody supplied in 1x PBS buffer with 0.09% (w/v) sodium azide and 2% sucrose. <i>Note that this product is shipped as lyophilized powder to China customers.</i>
Concentration:	lot specific
Purification:	Affinity purified
Conjugation:	Unconjugated
Storage:	For short term use, store at 2-8°C up to 1 week. For long term storage, store at -20°C in small aliquots to prevent freeze-thaw cycles.
Stability:	Shelf life: one year from despatch.
Predicted Protein Size:	37 kDa
Gene Name:	Y-box binding protein 3
Database Link:	NP_001138898.1 Entrez Gene 8531 Human P16989-3
Synonyms:	CSDA; CSDA1; DBPA; ZONAB
Protein Families:	Transcription Factors
Protein Pathways:	Tight junction



[View online »](#)

Product images:



Host: Rabbit
Target Name: CSDA
Sample Type: U937 Cell Lysate
Antibody Dilution: 1.0 μ g/ml

Host: Rabbit
Target Name: CSDA
Sample Tissue: Human U937 Whole Cell lysates
Antibody Dilution: 1 ug/ml