

Product datasheet for **TA362803**

Exonuclease 1 (EXO1) Rabbit Polyclonal Antibody

Product data:

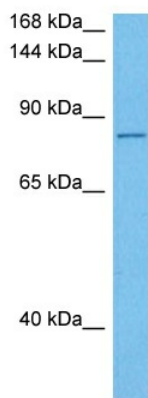
Product Type:	Primary Antibodies
Applications:	WB
Reactivity:	Human
Host:	Rabbit
Clonality:	Polyclonal
Immunogen:	The immunogen is a synthetic peptide directed towards the middle region of human EXO1
Specificity:	Expected reactivity: Human
Formulation:	Liquid. Purified antibody supplied in 1x PBS buffer with 0.09% (w/v) sodium azide and 2% sucrose. <i>Note that this product is shipped as lyophilized powder to China customers.</i>
Concentration:	lot specific
Purification:	Affinity purified
Conjugation:	Unconjugated
Storage:	For short term use, store at 2-8°C up to 1 week. For long term storage, store at -20°C in small aliquots to prevent freeze-thaw cycles.
Stability:	Shelf life: one year from despatch.
Predicted Protein Size:	88 kDa
Gene Name:	exonuclease 1
Database Link:	NP_003677.4 Entrez Gene 9156 Human Q9UQ84-4
Background:	This gene encodes a protein with 5' to 3' exonuclease activity as well as an RNase H activity. It is similar to the <i>Saccharomyces cerevisiae</i> protein Exo1 which interacts with Msh2 and which is involved in mismatch repair and recombination. Alternative splicing of this gene results in three transcript variants encoding two different isoforms.
Synonyms:	EXO1; HEX1; hExo1; hExoI
Protein Families:	Druggable Genome, Stem cell - Pluripotency



[View online »](#)

Protein Pathways: Mismatch repair

Product images:



Host: Rabbit
Target Name: EXO1
Sample Type: 786-0 Cell Lysate
Antibody Dilution: 1.0 μ g/ml

Host: Rabbit
Target Name: EXO1
Sample Tissue: Human 786-0 Whole Cell lysates
Antibody Dilution: 1 μ g/ml