

Product datasheet for **TA362787**

NOM1 Rabbit Polyclonal Antibody

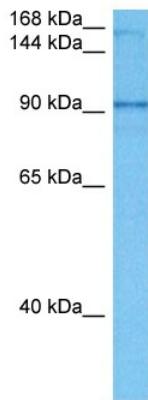
Product data:

Product Type:	Primary Antibodies
Applications:	WB
Reactivity:	Human
Host:	Rabbit
Clonality:	Polyclonal
Immunogen:	The immunogen is a synthetic peptide directed towards the middle region of human NOM1
Specificity:	Expected reactivity: Human
Formulation:	Liquid. Purified antibody supplied in 1x PBS buffer with 0.09% (w/v) sodium azide and 2% sucrose.
Concentration:	lot specific
Purification:	Affinity purified
Conjugation:	Unconjugated
Storage:	For short term use, store at 2-8°C up to 1 week. For long term storage, store at -20°C in small aliquots to prevent freeze-thaw cycles.
Stability:	Shelf life: one year from despatch.
Predicted Protein Size:	94 kDa
Gene Name:	nucleolar protein with MIF4G domain 1
Database Link:	NP_612409.1 Entrez Gene 64434 Human Q5C9Z4
Background:	Proteins that contain MIF4G and/or MA3 domains, such as NOM1, function in protein translation. These domains include binding sites for members of the EIF4A family of ATP-dependent DEAD box RNA helicases .
Synonyms:	C7orf3; FLJ16401; SGD1



[View online »](#)

Product images:



Host: Rabbit
Target Name: NOM1
Sample Type: 293T Cell Lysate
Antibody Dilution: 1.0µg/ml

Host: Rabbit
Target Name: NOM1
Sample Tissue: Human 293T Whole Cell lysates
Antibody Dilution: 1ug/ml