

Product datasheet for **TA362781**

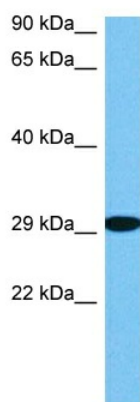
MAK16 Rabbit Polyclonal Antibody

Product data:

Product Type:	Primary Antibodies
Applications:	WB
Reactivity:	Human
Host:	Rabbit
Clonality:	Polyclonal
Immunogen:	The immunogen is a synthetic peptide directed towards the middle region of human MAK16
Specificity:	Expected reactivity: Human
Formulation:	Liquid. Purified antibody supplied in 1x PBS buffer with 0.09% (w/v) sodium azide and 2% sucrose.
Concentration:	lot specific
Purification:	Affinity purified
Conjugation:	Unconjugated
Storage:	For short term use, store at 2-8°C up to 1 week. For long term storage, store at -20°C in small aliquots to prevent freeze-thaw cycles.
Stability:	Shelf life: one year from despatch.
Predicted Protein Size:	33 kDa
Gene Name:	MAK16 homolog
Database Link:	NP_115898.2 Entrez Gene 84549 Human Q9BXY0
Background:	The function of this protein remains unknown.
Synonyms:	MAK16L; NNP78; RBM13



[View online »](#)

Product images:


Host: Rabbit
 Target Name: MAK16
 Sample Type: HepG2 Cell Lysate
 Antibody Dilution: 1.0µg/ml

Host: Rabbit
 Target Name: MAK16
 Sample Tissue: Human HepG2 Whole Cell lysates
 Antibody Dilution: 1ug/ml