

Product datasheet for **TA362758**

LSM4 Rabbit Polyclonal Antibody

Product data:

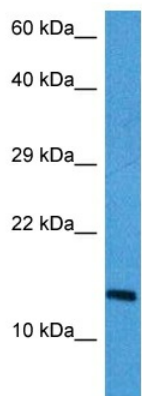
Product Type:	Primary Antibodies
Applications:	WB
Reactivity:	Human
Host:	Rabbit
Clonality:	Polyclonal
Immunogen:	The immunogen is a synthetic peptide directed towards the C terminal region of human LSM4
Specificity:	Expected reactivity: Human
Formulation:	Liquid. Purified antibody supplied in 1x PBS buffer with 0.09% (w/v) sodium azide and 2% sucrose. <i>Note that this product is shipped as lyophilized powder to China customers.</i>
Concentration:	lot specific
Purification:	Affinity purified
Conjugation:	Unconjugated
Storage:	For short term use, store at 2-8°C up to 1 week. For long term storage, store at -20°C in small aliquots to prevent freeze-thaw cycles.
Stability:	Shelf life: one year from despatch.
Predicted Protein Size:	15 kDa
Gene Name:	LSM4 homolog, U6 small nuclear RNA and mRNA degradation associated
Database Link:	NP_036453.1 Entrez Gene 25804 Human Q9Y4Z0
Background:	This gene encodes a member of the LS _m family of RNA-binding proteins. LS _m proteins form stable heteromers that bind specifically to the 3'-terminal oligo(U) tract of U6 snRNA and may play a role in pre-mRNA splicing by mediating U4/U6 snRNP formation. Alternatively spliced transcript variants encoding multiple isoforms have been observed for this gene.
Synonyms:	GRP; YER112W
Protein Families:	Stem cell - Pluripotency



[View online »](#)

Protein Pathways: RNA degradation, Spliceosome

Product images:



Host: Rabbit
Target Name: LSM4
Sample Type: HT1080 Cell Lysate
Antibody Dilution: 1.0 μ g/ml

Host: Rabbit
Target Name: LSM4
Sample Tissue: Human HT1080 Whole Cell lysates
Antibody Dilution: 1 μ g/ml