

## Product datasheet for **TA362749**

### SECISBP2 Rabbit Polyclonal Antibody

#### Product data:

Product Type:	Primary Antibodies
Applications:	WB
Reactivity:	Human
Host:	Rabbit
Clonality:	Polyclonal
Immunogen:	The immunogen is a synthetic peptide directed towards the middle region of human SECISBP2
Specificity:	<b>Expected reactivity:</b> Human
Formulation:	Liquid. Purified antibody supplied in 1x PBS buffer with 0.09% (w/v) sodium azide and 2% sucrose. <i>Note that this product is shipped as lyophilized powder to China customers.</i>
Concentration:	lot specific
Purification:	Affinity purified
Conjugation:	Unconjugated
Storage:	For short term use, store at 2-8°C up to 1 week. For long term storage, store at -20°C in small aliquots to prevent freeze-thaw cycles.
Stability:	Shelf life: one year from despatch.
Predicted Protein Size:	85 kDa
Gene Name:	SECIS binding protein 2
Database Link:	<a href="#">NP_001269617.1</a> <a href="#">Entrez Gene 79048 Human</a> <a href="#">Q96T21-2</a>



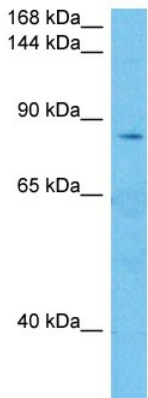
[View online »](#)

**Background:**

The incorporation of selenocysteine into a protein requires the concerted action of an mRNA element called a sec insertion sequence (SECIS), a selenocysteine-specific translation elongation factor and a SECIS binding protein. With these elements in place, a UGA codon can be decoded as selenocysteine. The gene described in this record encodes a nuclear protein that functions as a SECIS binding protein. Mutations in this gene have been associated with a reduction in activity of a specific thyroxine deiodinase, a selenocysteine-containing enzyme, and abnormal thyroid hormone metabolism. Alternate splicing results in multiple transcript variants.

**Synonyms:**

DKFZp686C09169; SBP2

**Product images:**

Host: Rabbit  
Target Name: SECISBP2  
Sample Type: Mesenchymoma Tumor Lysate  
Antibody Dilution: 1.0µg/ml

Host: Rabbit  
Target Name: SECISBP2  
Sample Tissue: Human Mesenchymoma Tumor lysates  
Antibody Dilution: 1ug/ml