

## Product datasheet for **TA362740**

### **MNK1 (MKNK1) Rabbit Polyclonal Antibody**

#### **Product data:**

|                         |                                                                                                                                                                                                                                                                                                                                                                                                                        |
|-------------------------|------------------------------------------------------------------------------------------------------------------------------------------------------------------------------------------------------------------------------------------------------------------------------------------------------------------------------------------------------------------------------------------------------------------------|
| Product Type:           | Primary Antibodies                                                                                                                                                                                                                                                                                                                                                                                                     |
| Applications:           | WB                                                                                                                                                                                                                                                                                                                                                                                                                     |
| Reactivity:             | Human                                                                                                                                                                                                                                                                                                                                                                                                                  |
| Host:                   | Rabbit                                                                                                                                                                                                                                                                                                                                                                                                                 |
| Clonality:              | Polyclonal                                                                                                                                                                                                                                                                                                                                                                                                             |
| Immunogen:              | The immunogen is a synthetic peptide directed towards the N terminal region of human MKNK1                                                                                                                                                                                                                                                                                                                             |
| Specificity:            | <b>Expected reactivity:</b> Human                                                                                                                                                                                                                                                                                                                                                                                      |
| Formulation:            | Liquid. Purified antibody supplied in 1x PBS buffer with 0.09% (w/v) sodium azide and 2% sucrose.<br><i>Note that this product is shipped as lyophilized powder to China customers.</i>                                                                                                                                                                                                                                |
| Concentration:          | lot specific                                                                                                                                                                                                                                                                                                                                                                                                           |
| Purification:           | Affinity purified                                                                                                                                                                                                                                                                                                                                                                                                      |
| Conjugation:            | Unconjugated                                                                                                                                                                                                                                                                                                                                                                                                           |
| Storage:                | For short term use, store at 2-8°C up to 1 week. For long term storage, store at -20°C in small aliquots to prevent freeze-thaw cycles.                                                                                                                                                                                                                                                                                |
| Stability:              | Shelf life: one year from despatch.                                                                                                                                                                                                                                                                                                                                                                                    |
| Predicted Protein Size: | 46 kDa                                                                                                                                                                                                                                                                                                                                                                                                                 |
| Gene Name:              | MAP kinase interacting serine/threonine kinase 1                                                                                                                                                                                                                                                                                                                                                                       |
| Database Link:          | <a href="#">NP_001129025.1</a><br><a href="#">Entrez Gene 8569 Human</a><br><a href="#">Q9BUB5-2</a>                                                                                                                                                                                                                                                                                                                   |
| Background:             | This gene encodes a Ser/Thr protein kinase that interacts with, and is activated by ERK1 and p38 mitogen-activated protein kinases, and thus may play a role in the response to environmental stress and cytokines. This kinase may also regulate transcription by phosphorylating eIF4E via interaction with the C-terminal region of eIF4G. Alternatively spliced transcript variants have been noted for this gene. |
| Synonyms:               | MNK1                                                                                                                                                                                                                                                                                                                                                                                                                   |

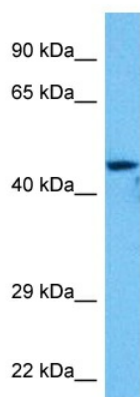


[View online »](#)

Protein Families: Druggable Genome, Protein Kinase

Protein Pathways: Insulin signaling pathway, MAPK signaling pathway

### Product images:



Host: Rabbit  
Target Name: MKNK1  
Sample Type: PANC1 Cell Lysate  
Antibody Dilution: 1.0 $\mu$ g/ml

Host: Rabbit  
Target Name: MKNK1  
Sample Tissue: Human PANC1 Whole Cell lysates  
Antibody Dilution: 1 $\mu$ g/ml