

Product datasheet for **TA362739**

NPAT Rabbit Polyclonal Antibody

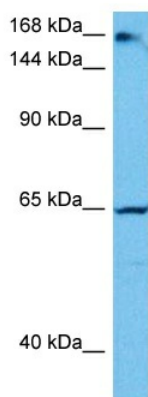
Product data:

Product Type:	Primary Antibodies
Applications:	WB
Reactivity:	Human
Host:	Rabbit
Clonality:	Polyclonal
Immunogen:	The immunogen is a synthetic peptide directed towards the middle region of human NPAT
Specificity:	Expected reactivity: Human
Formulation:	Liquid. Purified antibody supplied in 1x PBS buffer with 0.09% (w/v) sodium azide and 2% sucrose.
Concentration:	lot specific
Purification:	Affinity purified
Conjugation:	Unconjugated
Storage:	For short term use, store at 2-8°C up to 1 week. For long term storage, store at -20°C in small aliquots to prevent freeze-thaw cycles.
Stability:	Shelf life: one year from despatch.
Predicted Protein Size:	156 kDa
Gene Name:	nuclear protein, coactivator of histone transcription
Database Link:	NP_002510.2 Entrez Gene 4863 Human Q14207
Background:	Required for progression through the G1 and S phases of the cell cycle and for S phase entry. Activates transcription of the histone H2A, histone H2B, histone H3 and histone H4 genes in conjunction with MIZF. Also positively regulates the ATM, MIZF and PRKDC promoters. Transcriptional activation may be accomplished at least in part by the recruitment of the NuA4 histone acetyltransferase (HAT) complex to target gene promoters.
Synonyms:	CAND3; E14; p220



[View online »](#)

Product images:



Host: Rabbit
Target Name: NPAT
Sample Type: HepG2 Cell Lysate
Antibody Dilution: 1.0µg/ml

Host: Rabbit
Target Name: NPAT
Sample Tissue: Human HepG2 Whole Cell lysates
Antibody Dilution: 1ug/ml