

## Product datasheet for **TA362719**

### Nurim (NRM) Rabbit Polyclonal Antibody

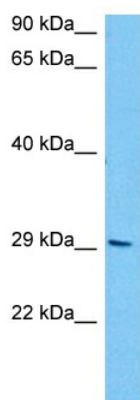
#### Product data:

Product Type:	Primary Antibodies
Applications:	WB
Reactivity:	Human
Host:	Rabbit
Clonality:	Polyclonal
Immunogen:	The immunogen is a synthetic peptide directed towards the C terminal region of human NRM
Specificity:	<b>Expected reactivity:</b> Human
Formulation:	Liquid. Purified antibody supplied in 1x PBS buffer with 0.09% (w/v) sodium azide and 2% sucrose. <i>Note that this product is shipped as lyophilized powder to China customers.</i>
Concentration:	lot specific
Purification:	Affinity purified
Conjugation:	Unconjugated
Storage:	For short term use, store at 2-8°C up to 1 week. For long term storage, store at -20°C in small aliquots to prevent freeze-thaw cycles.
Stability:	Shelf life: one year from despatch.
Predicted Protein Size:	29 kDa
Gene Name:	nurim (nuclear envelope membrane protein)
Database Link:	<a href="#">NP_001257636.1</a> <a href="#">Entrez Gene 11270 Human</a> <a href="#">Q8IXM6</a>
Background:	The protein encoded by this gene contains transmembrane domains and resides within the inner nuclear membrane, where it is tightly associated with the nucleus. This protein shares homology with isoprenylcysteine carboxymethyltransferase enzymes. Alternative splicing results in multiple transcript variants that encode different protein isoforms.
Synonyms:	NRM29; nurim; OTTHUMP00000029332
Protein Families:	Transmembrane



[View online »](#)

## Product images:



Host: Rabbit  
Target Name: NRM  
Sample Type: Jurkat Cell Lysate  
Antibody Dilution: 1.0 $\mu$ g/ml

Host: Rabbit  
Target Name: NRM  
Sample Tissue: Human Jurkat Whole Cell lysates  
Antibody Dilution: 1 $\mu$ g/ml