

## Product datasheet for **TA362701**

### FCP1 (CTDP1) Rabbit Polyclonal Antibody

#### Product data:

Product Type:	Primary Antibodies
Applications:	WB
Reactivity:	Human
Host:	Rabbit
Clonality:	Polyclonal
Immunogen:	The immunogen is a synthetic peptide directed towards the C terminal region of human CTDP1
Specificity:	<b>Expected reactivity:</b> Human
Formulation:	Liquid. Purified antibody supplied in 1x PBS buffer with 0.09% (w/v) sodium azide and 2% sucrose. <i>Note that this product is shipped as lyophilized powder to China customers.</i>
Concentration:	lot specific
Purification:	Affinity purified
Conjugation:	Unconjugated
Storage:	For short term use, store at 2-8°C up to 1 week. For long term storage, store at -20°C in small aliquots to prevent freeze-thaw cycles.
Stability:	Shelf life: one year from despatch.
Predicted Protein Size:	105 kDa
Gene Name:	CTD phosphatase subunit 1
Database Link:	<a href="#">NP_001189433.1</a> <a href="#">Entrez Gene 9150 Human</a> <a href="#">Q9Y5B0</a>
Background:	This gene encodes a protein which interacts with the carboxy-terminus of the RAP74 subunit of transcription initiation factor TFIIF, and functions as a phosphatase that processively dephosphorylates the C-terminus of POLR2A (a subunit of RNA polymerase II), making it available for initiation of gene expression. Mutations in this gene are associated with congenital cataracts, facial dysmorphism and neuropathy syndrome (CCFDN). Alternatively spliced transcript variants encoding different isoforms have been described for this gene.

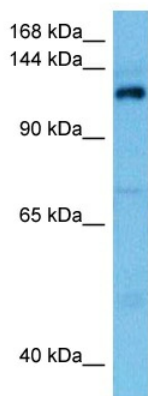


[View online »](#)

Synonyms: CCFDN; FCP1

Protein Families: Druggable Genome, Phosphatase, Transcription Factors

### Product images:



Host: Rabbit  
Target Name: CTDP1  
Sample Type: U937 Cell Lysate  
Antibody Dilution: 1.0 $\mu$ g/ml

Host: Rabbit  
Target Name: CTDP1  
Sample Tissue: Human U937 Whole Cell lysates  
Antibody Dilution: 1 $\mu$ g/ml