

## Product datasheet for **TA362690**

### **AIBZIP (CREB3L4) Rabbit Polyclonal Antibody**

#### **Product data:**

Product Type:	Primary Antibodies
Applications:	WB
Reactivity:	Human
Host:	Rabbit
Clonality:	Polyclonal
Immunogen:	The immunogen is a synthetic peptide directed towards the middle region of human CREB3L4
Specificity:	<b>Expected reactivity:</b> Human
Formulation:	Liquid. Purified antibody supplied in 1x PBS buffer with 0.09% (w/v) sodium azide and 2% sucrose. <i>Note that this product is shipped as lyophilized powder to China customers.</i>
Concentration:	lot specific
Purification:	Affinity purified
Conjugation:	Unconjugated
Storage:	For short term use, store at 2-8°C up to 1 week. For long term storage, store at -20°C in small aliquots to prevent freeze-thaw cycles.
Stability:	Shelf life: one year from despatch.
Predicted Protein Size:	43 kDa
Gene Name:	cAMP responsive element binding protein 3-like 4
Database Link:	<a href="#">NP_001242907.1</a> <a href="#">Entrez Gene 148327 Human</a> <a href="#">Q8TEY5</a>
Background:	This gene encodes a CREB (cAMP responsive element binding) protein with a transmembrane domain which localizes it to the ER membrane. The encoded protein is a transcriptional activator which contains a dimerization domain, and this protein may function in a number of processing pathways including protein processing. Multiple transcript variants encoding different isoforms have been found for this gene.
Synonyms:	AIBZIP; ATCE1; CREB-4; CREB3; CREB4; hJAL; JAL; OTTHUMP00000035266; Tisp40

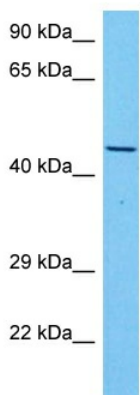


[View online »](#)

Protein Families: Transcription Factors

Protein Pathways: Huntington's disease, Melanogenesis, Prostate cancer

### Product images:



Host: Rabbit  
Target Name: CREB3L4  
Sample Type: HepG2 Cell Lysate  
Antibody Dilution: 1.0 $\mu$ g/ml

Host: Rabbit  
Target Name: CREB3L4  
Sample Tissue: Human HepG2 Whole Cell lysates  
Antibody Dilution: 1 $\mu$ g/ml