

Product datasheet for **TA362689**

PPP1R10 Rabbit Polyclonal Antibody

Product data:

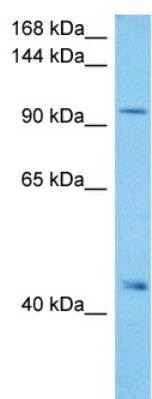
Product Type:	Primary Antibodies
Applications:	WB
Reactivity:	Human
Host:	Rabbit
Clonality:	Polyclonal
Immunogen:	The immunogen is a synthetic peptide directed towards the middle terminal region of human PPP1R10
Specificity:	Expected reactivity: Human
Formulation:	Liquid. Purified antibody supplied in 1x PBS buffer with 0.09% (w/v) sodium azide and 2% sucrose. <i>Note that this product is shipped as lyophilized powder to China customers.</i>
Concentration:	lot specific
Purification:	Affinity purified
Conjugation:	Unconjugated
Storage:	For short term use, store at 2-8°C up to 1 week. For long term storage, store at -20°C in small aliquots to prevent freeze-thaw cycles.
Stability:	Shelf life: one year from despatch.
Predicted Protein Size:	103 kDa
Gene Name:	protein phosphatase 1 regulatory subunit 10
Database Link:	NP_002705.2 Entrez Gene 5514 Human Q96QC0
Background:	This gene encodes a protein phosphatase 1 binding protein. The encoded protein plays a role in many cellular processes including cell cycle progression, DNA repair and apoptosis by regulating the activity of protein phosphatase 1. This gene lies within the major histocompatibility complex class I region on chromosome 6, and alternatively spliced transcript variants have been observed for this gene.
Synonyms:	CAT53; FB19; p99; PNUTS; PP1R10



[View online »](#)

Protein Families: Druggable Genome, Phosphatase, Transcription Factors

Product images:



Host: Rabbit
Target Name: PPP1R10
Sample Type: HCT15 Cell Lysate
Antibody Dilution: 1.0 μ g/ml

Host: Rabbit
Target Name: PPP1R10
Sample Tissue: Human HCT15 Whole Cell lysates
Antibody Dilution: 1 μ g/ml