

Product datasheet for **TA362688**

HSH2D Rabbit Polyclonal Antibody

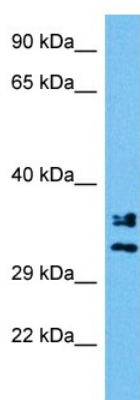
Product data:

Product Type:	Primary Antibodies
Applications:	WB
Reactivity:	Human
Host:	Rabbit
Clonality:	Polyclonal
Immunogen:	The immunogen is a synthetic peptide directed towards the middle region of human HSH2D
Specificity:	Expected reactivity: Human
Formulation:	Liquid. Purified antibody supplied in 1x PBS buffer with 0.09% (w/v) sodium azide and 2% sucrose. <i>Note that this product is shipped as lyophilized powder to China customers.</i>
Concentration:	lot specific
Purification:	Affinity purified
Conjugation:	Unconjugated
Storage:	For short term use, store at 2-8°C up to 1 week. For long term storage, store at -20°C in small aliquots to prevent freeze-thaw cycles.
Stability:	Shelf life: one year from despatch.
Predicted Protein Size:	32 kDa
Gene Name:	hematopoietic SH2 domain containing
Database Link:	NP_001278203.1 Entrez Gene 84941 Human Q96JZ2-2
Background:	T-cell activation requires 2 signals: recognition of antigen by the T-cell receptor and a costimulatory signal provided primarily by CD28 in naive T cells. HSH2 is a target of both of these signaling pathways.
Synonyms:	ALX; FLJ14886; HSH2



[View online »](#)

Product images:



Host: Rabbit
Target Name: HSH2D
Sample Type: OVCAR-3 Cell Lysate
Antibody Dilution: 1.0 μ g/ml

Host: Rabbit
Target Name: HSH2D
Sample Tissue: Human OVCAR-3 Whole Cell
lysates
Antibody Dilution: 1 μ g/ml