

Product datasheet for **TA362680**

DUSP22 Rabbit Polyclonal Antibody

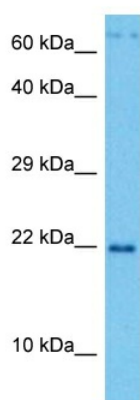
Product data:

Product Type:	Primary Antibodies
Applications:	WB
Reactivity:	Human
Host:	Rabbit
Clonality:	Polyclonal
Immunogen:	The immunogen is a synthetic peptide directed towards the N terminal region of Human DUSP22
Specificity:	Expected reactivity: Human
Formulation:	Liquid. Purified antibody supplied in 1x PBS buffer with 0.09% (w/v) sodium azide and 2% sucrose. <i>Note that this product is shipped as lyophilized powder to China customers.</i>
Concentration:	lot specific
Purification:	Affinity purified
Conjugation:	Unconjugated
Storage:	For short term use, store at 2-8°C up to 1 week. For long term storage, store at -20°C in small aliquots to prevent freeze-thaw cycles.
Stability:	Shelf life: one year from despatch.
Predicted Protein Size:	20 kDa
Gene Name:	dual specificity phosphatase 22
Database Link:	NP_001273484.1 Entrez Gene 56940 Human Q9NRW4
Background:	Activates the Jnk signaling pathway. Dephosphorylates and deactivates p38 and stress-activated protein kinase/c-Jun N-terminal kinase (SAPK/JNK) (By similarity).
Synonyms:	FLJ35864; JKAP; JSP-1; JSP1; LMW-DSP2; LMWDSP2; MKPX; VHX
Protein Families:	Druggable Genome, Phosphatase



[View online »](#)

Product images:



Host: Rabbit
Target Name: DUSP22
Sample Type: HCT116 Cell Lysate
Antibody Dilution: 1.0 μ g/ml

Host: Rabbit
Target Name: DUSP22
Sample Tissue: Human HCT116 Whole Cell lysates
Antibody Dilution: 1 μ g/ml