

Product datasheet for TA362671

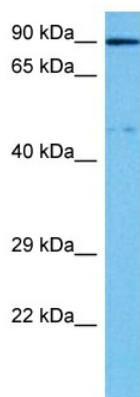
CCHCR1 Rabbit Polyclonal Antibody

Product data:

Product Type:	Primary Antibodies
Applications:	WB
Reactivity:	Human
Host:	Rabbit
Clonality:	Polyclonal
Immunogen:	The immunogen is a synthetic peptide directed towards the middle region of Human CCHCR1
Specificity:	Expected reactivity: Human
Formulation:	Liquid. Purified antibody supplied in 1x PBS buffer with 0.09% (w/v) sodium azide and 2% sucrose.
Concentration:	lot specific
Purification:	Affinity purified
Conjugation:	Unconjugated
Storage:	For short term use, store at 2-8°C up to 1 week. For long term storage, store at -20°C in small aliquots to prevent freeze-thaw cycles.
Stability:	Shelf life: one year from despatch.
Predicted Protein Size:	86 kDa
Gene Name:	coiled-coil alpha-helical rod protein 1
Database Link:	NP_001099033.1 Entrez Gene 54535 Human Q8TD31
Background:	May be a regulator of keratinocyte proliferation or differentiation.
Synonyms:	C6orf18; HCR; MGC126371; MGC126372; Pg8; SBP

[View online »](#)

Product images:



Host: Rabbit
Target Name: CCHCR1
Sample Type: THP-1 Cell Lysate
Antibody Dilution: 1.0µg/ml

Host: Rabbit
Target Name: CCHCR1
Sample Tissue: Human THP-1 Whole Cell lysates
Antibody Dilution: 1ug/ml