

## Product datasheet for **TA362667**

### ADRM1 Rabbit Polyclonal Antibody

#### Product data:

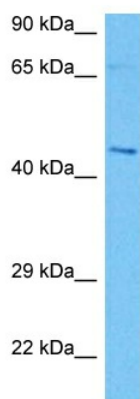
|                         |  |
|-------------------------|--|
| Product Type:           | Primary Antibodies   |
| Applications:           | WB   |
| Reactivity:             | Human  |
| Host:                   | Rabbit   |
| Clonality:              | Polyclonal   |
| Immunogen:              | The immunogen is a synthetic peptide directed towards the C terminal region of human ADRM1   |
| Specificity:            | <b>Expected reactivity:</b> Human  |
| Formulation:            | Liquid. Purified antibody supplied in 1x PBS buffer with 0.09% (w/v) sodium azide and 2% sucrose.<br><i>Note that this product is shipped as lyophilized powder to China customers.</i>  |
| Concentration:          | lot specific   |
| Purification:           | Affinity purified  |
| Conjugation:            | Unconjugated   |
| Storage:                | For short term use, store at 2-8°C up to 1 week. For long term storage, store at -20°C in small aliquots to prevent freeze-thaw cycles.  |
| Stability:              | Shelf life: one year from despatch.  |
| Predicted Protein Size: | 44 kDa   |
| Gene Name:              | adhesion regulating molecule 1   |
| Database Link:          | <a href="#">NP_001268366.1</a><br><a href="#">Entrez Gene 11047 Human</a><br><a href="#">Q16186</a>  |
| Background:             | This gene encodes a member of the adhesion regulating molecule 1 protein family. The encoded protein is a component of the proteasome where it acts as a ubiquitin receptor and recruits the deubiquitinating enzyme, ubiquitin carboxyl-terminal hydrolase L5. Increased levels of the encoded protein are associated with increased cell adhesion, which is likely an indirect effect of this intracellular protein. Dysregulation of this gene has been implicated in carcinogenesis. Alternative splicing results in multiple transcript variants. |



[View online »](#)

Synonyms: ARM-1; ARM1; GP110; hRpn13; MGC29536; Rpn13

### Product images:



Host: Rabbit  
Target Name: ADRM1  
Sample Type: Jurkat Cell Lysate  
Antibody Dilution: 1.0 $\mu$ g/ml

Host: Rabbit  
Target Name: ADRM1  
Sample Tissue: Human Jurkat Whole Cell lysates  
Antibody Dilution: 1 $\mu$ g/ml