

## Product datasheet for **TA362664**

### **TBX22 Rabbit Polyclonal Antibody**

#### **Product data:**

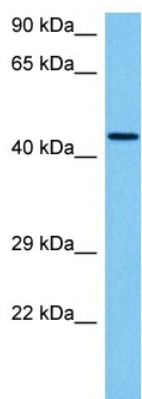
Product Type:	Primary Antibodies
Applications:	WB
Reactivity:	Human
Host:	Rabbit
Clonality:	Polyclonal
Immunogen:	The immunogen is a synthetic peptide directed towards the middle region of human TBX22
Specificity:	<b>Expected reactivity:</b> Human
Formulation:	Liquid. Purified antibody supplied in 1x PBS buffer with 0.09% (w/v) sodium azide and 2% sucrose. <i>Note that this product is shipped as lyophilized powder to China customers.</i>
Concentration:	lot specific
Purification:	Affinity purified
Conjugation:	Unconjugated
Storage:	For short term use, store at 2-8°C up to 1 week. For long term storage, store at -20°C in small aliquots to prevent freeze-thaw cycles.
Stability:	Shelf life: one year from despatch.
Predicted Protein Size:	44 kDa
Gene Name:	T-box 22
Database Link:	<a href="#">NP_001103348.1</a> <a href="#">Entrez Gene 50945 Human</a> <a href="#">Q9Y458-2</a>
Background:	This gene is a member of a phylogenetically conserved family of genes that share a common DNA-binding domain, the T-box. T-box genes encode transcription factors involved in the regulation of developmental processes. Mutations in this gene have been associated with the inherited X-linked disorder, Cleft palate with ankyloglossia, and it is believed to play a major role in human palatogenesis. Alternatively spliced transcript variants encoding different isoforms have been found for this gene.
Synonyms:	ABERS; CLPA; CPX; dj795G23.1; TBXX



[View online »](#)

Protein Families: Transcription Factors

## Product images:



Host: Rabbit  
Target Name: TBX22  
Sample Type: Hela Cell Lysate  
Antibody Dilution: 1.0µg/ml

Host: Rabbit  
Target Name: TBX22  
Sample Tissue: Human Hela Whole Cell lysates  
Antibody Dilution: 1ug/ml