

## Product datasheet for **TA362661**

### ORC5L (ORC5) Rabbit Polyclonal Antibody

#### Product data:

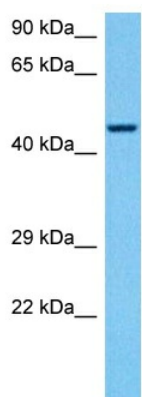
Product Type:	Primary Antibodies
Applications:	WB
Reactivity:	Human
Host:	Rabbit
Clonality:	Polyclonal
Immunogen:	The immunogen is a synthetic peptide directed towards the middle region of human ORC5
Specificity:	<b>Expected reactivity:</b> Human
Formulation:	Liquid. Purified antibody supplied in 1x PBS buffer with 0.09% (w/v) sodium azide and 2% sucrose. <i>Note that this product is shipped as lyophilized powder to China customers.</i>
Concentration:	lot specific
Purification:	Affinity purified
Conjugation:	Unconjugated
Storage:	For short term use, store at 2-8°C up to 1 week. For long term storage, store at -20°C in small aliquots to prevent freeze-thaw cycles.
Stability:	Shelf life: one year from despatch.
Predicted Protein Size:	50 kDa
Gene Name:	origin recognition complex subunit 5
Database Link:	<a href="#">NP_002544.1</a> <a href="#">Entrez Gene 5001 Human</a> <a href="#">O43913</a>
Background:	The origin recognition complex (ORC) is a highly conserved six subunit protein complex essential for the initiation of the DNA replication in eukaryotic cells. Studies in yeast demonstrated that ORC binds specifically to origins of replication and serves as a platform for the assembly of additional initiation factors such as Cdc6 and Mcm proteins. The protein encoded by this gene is a subunit of the ORC complex. Alternatively spliced transcript variants encoding distinct isoforms have been described.
Synonyms:	ORC5L; ORC5P; ORC5T



[View online »](#)

Protein Pathways: Cell cycle

### Product images:



Host: Rabbit  
Target Name: ORC5  
Sample Type: 786-0 Cell Lysate  
Antibody Dilution: 1.0µg/ml

Host: Rabbit  
Target Name: ORC5  
Sample Tissue: Human 786-0 Whole Cell lysates  
Antibody Dilution: 1ug/ml