

Product datasheet for **TA362647**

MAGOH Rabbit Polyclonal Antibody

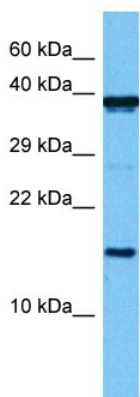
Product data:

Product Type:	Primary Antibodies
Applications:	WB
Reactivity:	Human
Host:	Rabbit
Clonality:	Polyclonal
Immunogen:	The immunogen is a synthetic peptide directed towards the middle region of human MAGOH
Specificity:	Expected reactivity: Human
Formulation:	Liquid. Purified antibody supplied in 1x PBS buffer with 0.09% (w/v) sodium azide and 2% sucrose. <i>Note that this product is shipped as lyophilized powder to China customers.</i>
Concentration:	lot specific
Purification:	Affinity purified
Conjugation:	Unconjugated
Storage:	For short term use, store at 2-8°C up to 1 week. For long term storage, store at -20°C in small aliquots to prevent freeze-thaw cycles.
Stability:	Shelf life: one year from despatch.
Predicted Protein Size:	16 kDa
Gene Name:	mago homolog, exon junction complex core component
Database Link:	NP_002361.1 Entrez Gene 4116 Human P61326
Background:	Drosophila that have mutations in their mago nashi (grandchildless) gene produce progeny with defects in germlasm assembly and germline development. This gene encodes the mammalian mago nashi homolog. In mammals, mRNA expression is not limited to the germ plasm, but is expressed ubiquitously in adult tissues and can be induced by serum stimulation of quiescent fibroblasts.
Synonyms:	MAGOHA
Protein Pathways:	Spliceosome



[View online »](#)

Product images:



Host: Rabbit
Target Name: MAGOH
Sample Type: OVCAR-3 Cell Lysate
Antibody Dilution: 1.0 μ g/ml

Host: Rabbit
Target Name: MAGOH
Sample Tissue: Human OVCAR-3 Whole Cell lysates
Antibody Dilution: 1 μ g/ml