

Product datasheet for **TA362646**

ZNF148 Rabbit Polyclonal Antibody

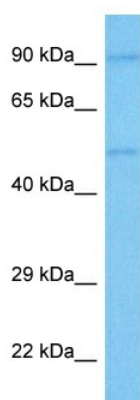
Product data:

| | |
|-------------------------|---|
| Product Type: | Primary Antibodies |
| Applications: | WB |
| Reactivity: | Human |
| Host: | Rabbit |
| Clonality: | Polyclonal |
| Immunogen: | The immunogen is a synthetic peptide directed towards the middle region of human ZNF148 |
| Specificity: | Expected reactivity: Human |
| Formulation: | Liquid. Purified antibody supplied in 1x PBS buffer with 0.09% (w/v) sodium azide and 2% sucrose. <i>Note that this product is shipped as lyophilized powder to China customers.</i> |
| Concentration: | lot specific |
| Purification: | Affinity purified |
| Conjugation: | Unconjugated |
| Storage: | For short term use, store at 2-8°C up to 1 week. For long term storage, store at -20°C in small aliquots to prevent freeze-thaw cycles. |
| Stability: | Shelf life: one year from despatch. |
| Predicted Protein Size: | 87 kDa |
| Gene Name: | zinc finger protein 148 |
| Database Link: | NP_068799.2 Entrez Gene 7707 Human Q9UQR1 |
| Background: | Involved in transcriptional regulation. Represses the transcription of a number of genes including gastrin, stromelysin and enolase. Binds to the G-rich box in the enhancer region of these genes. |
| Synonyms: | BERF-1; BFCOL1; HT-BETA; pHZ-52; ZBP-89; ZBP89; ZFP148 |
| Protein Families: | Transcription Factors |



[View online »](#)

Product images:



Host: Rabbit
Target Name: ZNF148
Sample Type: MCF7 Cell Lysate
Antibody Dilution: 1.0 μ g/ml

Host: Rabbit
Target Name: ZNF148
Sample Tissue: Human MCF7 Whole Cell lysates
Antibody Dilution: 1 μ g/ml