

Product datasheet for **TA362640**

BCL9 Rabbit Polyclonal Antibody

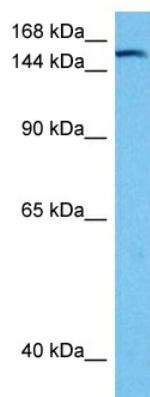
Product data:

Product Type:	Primary Antibodies
Applications:	WB
Reactivity:	Human
Host:	Rabbit
Clonality:	Polyclonal
Immunogen:	The immunogen is a synthetic peptide directed towards the N terminal region of human BCL9
Specificity:	Expected reactivity: Human
Formulation:	Liquid. Purified antibody supplied in 1x PBS buffer with 0.09% (w/v) sodium azide and 2% sucrose. <i>Note that this product is shipped as lyophilized powder to China customers.</i>
Concentration:	lot specific
Purification:	Affinity purified
Conjugation:	Unconjugated
Storage:	For short term use, store at 2-8°C up to 1 week. For long term storage, store at -20°C in small aliquots to prevent freeze-thaw cycles.
Stability:	Shelf life: one year from despatch.
Predicted Protein Size:	156 kDa
Gene Name:	B-cell CLL/lymphoma 9
Database Link:	NP_004317.2 Entrez Gene 607 Human O00512
Background:	BCL9 is associated with B-cell acute lymphoblastic leukemia. It may be a target of translocation in B-cell malignancies with abnormalities of 1q21. Its function is unknown. The overexpression of BCL9 may be of pathogenic significance in B-cell malignancies.
Synonyms:	Bcl-9; LGS; MGC131591
Protein Families:	Druggable Genome



[View online »](#)

Product images:



Host: Rabbit
Target Name: BCL9
Sample Type: LN18 Cell Lysate
Antibody Dilution: 1.0 μ g/ml

Host: Rabbit
Target Name: BCL9
Sample Tissue: Human LN18 Whole Cell lysates
Antibody Dilution: 1 μ g/ml