

Product datasheet for **TA362634**

PRPF31 Rabbit Polyclonal Antibody

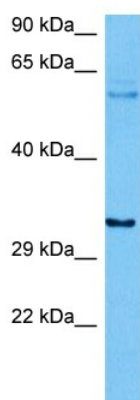
Product data:

| | |
|-------------------------|--|
| Product Type: | Primary Antibodies |
| Applications: | WB |
| Reactivity: | Human |
| Host: | Rabbit |
| Clonality: | Polyclonal |
| Immunogen: | The immunogen is a synthetic peptide directed towards the middle region of human PRPF31 |
| Specificity: | Expected reactivity: Human |
| Formulation: | Liquid. Purified antibody supplied in 1x PBS buffer with 0.09% (w/v) sodium azide and 2% sucrose. <i>Note that this product is shipped as lyophilized powder to China customers.</i> |
| Concentration: | lot specific |
| Purification: | Affinity purified |
| Conjugation: | Unconjugated |
| Storage: | For short term use, store at 2-8°C up to 1 week. For long term storage, store at -20°C in small aliquots to prevent freeze-thaw cycles. |
| Stability: | Shelf life: one year from despatch. |
| Predicted Protein Size: | 30 kDa |
| Gene Name: | pre-mRNA processing factor 31 |
| Database Link: | NP_056444.3 Entrez Gene 26121 Human Q8WWY3-3 |
| Background: | This gene encodes a component of the spliceosome complex and is one of several retinitis pigmentosa-causing genes. When the gene product is added to the spliceosome complex, activation occurs. |
| Synonyms: | DKFZp566J153; hPrp31; NY-BR-99; PRP31; RP11 |
| Protein Families: | Druggable Genome |
| Protein Pathways: | Spliceosome |



[View online »](#)

Product images:



Host: Rabbit
Target Name: PRPF31
Sample Type: LN18 Cell Lysate
Antibody Dilution: 1.0 μ g/ml

Host: Rabbit
Target Name: PRPF31
Sample Tissue: Human LN18 Whole Cell lysates
Antibody Dilution: 1 μ g/ml