

## Product datasheet for **TA362630**

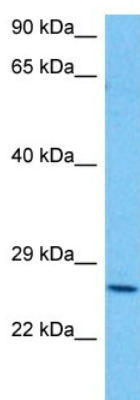
### BRMS1 Rabbit Polyclonal Antibody

#### Product data:

Product Type:	Primary Antibodies
Applications:	WB
Reactivity:	Human
Host:	Rabbit
Clonality:	Polyclonal
Immunogen:	The immunogen is a synthetic peptide directed towards the middle region of human BRMS1
Specificity:	<b>Expected reactivity:</b> Human
Formulation:	Liquid. Purified antibody supplied in 1x PBS buffer with 0.09% (w/v) sodium azide and 2% sucrose. <i>Note that this product is shipped as lyophilized powder to China customers.</i>
Concentration:	lot specific
Purification:	Affinity purified
Conjugation:	Unconjugated
Storage:	For short term use, store at 2-8°C up to 1 week. For long term storage, store at -20°C in small aliquots to prevent freeze-thaw cycles.
Stability:	Shelf life: one year from despatch.
Predicted Protein Size:	27 kDa
Gene Name:	breast cancer metastasis suppressor 1
Database Link:	<a href="#">NP_056214.1</a> <a href="#">Entrez Gene 25855 Human</a> <a href="#">Q9HCU9</a>
Background:	This gene reduces the metastatic potential, but not the tumorigenicity, of human breast cancer and melanoma cell lines. The protein encoded by this gene localizes primarily to the nucleus and is a component of the mSin3a family of histone deacetylase complexes (HDAC). The protein contains two coiled-coil motifs and several imperfect leucine zipper motifs. Alternative splicing results in two transcript variants encoding different isoforms.
Synonyms:	DKFZP564A063
Protein Families:	Druggable Genome



[View online »](#)

**Product images:**

Host: Rabbit  
Target Name: BRMS1  
Sample Type: HepG2 Cell Lysate  
Antibody Dilution: 1.0 $\mu$ g/ml

Host: Rabbit  
Target Name: BRMS1  
Sample Tissue: Human HepG2 Whole Cell lysates  
Antibody Dilution: 1 $\mu$ g/ml