

Product datasheet for **TA362626**

SEC13L1 (SEC13) Rabbit Polyclonal Antibody

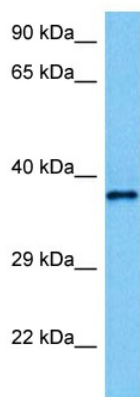
Product data:

Product Type:	Primary Antibodies
Applications:	WB
Reactivity:	Human
Host:	Rabbit
Clonality:	Polyclonal
Immunogen:	The immunogen is a synthetic peptide directed towards the middle region of human SEC13
Specificity:	Expected reactivity: Human
Formulation:	Liquid. Purified antibody supplied in 1x PBS buffer with 0.09% (w/v) sodium azide and 2% sucrose. <i>Note that this product is shipped as lyophilized powder to China customers.</i>
Concentration:	lot specific
Purification:	Affinity purified
Conjugation:	Unconjugated
Storage:	For short term use, store at 2-8°C up to 1 week. For long term storage, store at -20°C in small aliquots to prevent freeze-thaw cycles.
Stability:	Shelf life: one year from despatch.
Predicted Protein Size:	35 kDa
Gene Name:	SEC13 homolog, nuclear pore and COPII coat complex component
Database Link:	NP_001129498.1 Entrez Gene 6396 Human P55735
Background:	The protein encoded by this gene belongs to the SEC13 family of WD-repeat proteins. It is a constituent of the endoplasmic reticulum and the nuclear pore complex. It has similarity to the yeast SEC13 protein, which is required for vesicle biogenesis from endoplasmic reticulum during the transport of proteins. Multiple alternatively spliced transcript variants have been found.
Synonyms:	D3S1231E; npp-20; SEC13L1; SEC13R



[View online »](#)

Product images:



Host: Rabbit
Target Name: SEC13
Sample Type: 786-0 Cell Lysate
Antibody Dilution: 1.0µg/ml

Host: Rabbit
Target Name: SEC13
Sample Tissue: Human 786-0 Whole Cell lysates
Antibody Dilution: 1 ug/ml