

Product datasheet for **TA362624**

NISCH Rabbit Polyclonal Antibody

Product data:

Product Type:	Primary Antibodies
Applications:	WB
Reactivity:	Human
Host:	Rabbit
Clonality:	Polyclonal
Immunogen:	The immunogen is a synthetic peptide directed towards the C terminal region of human NISCH
Specificity:	Expected reactivity: Human
Formulation:	Liquid. Purified antibody supplied in 1x PBS buffer with 0.09% (w/v) sodium azide and 2% sucrose.
Concentration:	lot specific
Purification:	Affinity purified
Conjugation:	Unconjugated
Storage:	For short term use, store at 2-8°C up to 1 week. For long term storage, store at -20°C in small aliquots to prevent freeze-thaw cycles.
Stability:	Shelf life: one year from despatch.
Predicted Protein Size:	109 kDa
Gene Name:	nischarin
Database Link:	NP_001263222.1 Entrez Gene 11188 Human Q9Y2I1-2

[View online »](#)

Background:

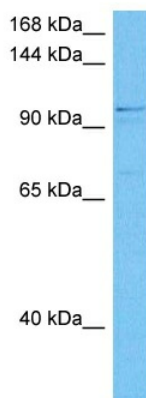
This gene encodes a nonadrenergic imidazoline-1 receptor protein that localizes to the cytosol and anchors to the inner layer of the plasma membrane. The orthologous mouse protein has been shown to influence cytoskeletal organization and cell migration by binding to alpha-5-beta-1 integrin. In humans, this protein has been shown to bind to the adapter insulin receptor substrate 4 (IRS4) to mediate translocation of alpha-5 integrin from the cell membrane to endosomes. Expression of this protein was reduced in human breast cancers while its overexpression reduced tumor growth and metastasis; possibly by limiting the expression of alpha-5 integrin. In human cardiac tissue, this gene was found to affect cell growth and death while in neural tissue it affected neuronal growth and differentiation. Alternative splicing results in multiple transcript variants encoding different isoforms. Some isoforms lack the expected C-terminal domains of a functional imidazoline receptor.

Synonyms:

FLJ14425; FLJ40413; FLJ90519; hIRAS; I-1; I1R; IR1; IRAS; KIAA0975; nischarin

Protein Families:

Druggable Genome

Product images:


Host: Rabbit
Target Name: NISCH
Sample Type: PANC1 Cell Lysate
Antibody Dilution: 1.0µg/ml

Host: Rabbit
Target Name: NISCH
Sample Tissue: Human PANC1 Whole Cell lysates
Antibody Dilution: 1ug/ml