

Product datasheet for **TA362616**

WAC Rabbit Polyclonal Antibody

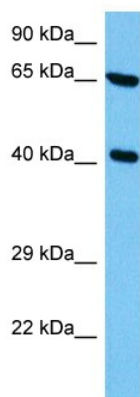
Product data:

| | |
|-------------------------|--|
| Product Type: | Primary Antibodies |
| Applications: | WB |
| Reactivity: | Human |
| Host: | Rabbit |
| Clonality: | Polyclonal |
| Immunogen: | The immunogen is a synthetic peptide directed towards the middle region of human WAC |
| Specificity: | Expected reactivity: Human |
| Formulation: | Liquid. Purified antibody supplied in 1x PBS buffer with 0.09% (w/v) sodium azide and 2% sucrose. |
| Concentration: | lot specific |
| Purification: | Affinity purified |
| Conjugation: | Unconjugated |
| Storage: | For short term use, store at 2-8°C up to 1 week. For long term storage, store at -20°C in small aliquots to prevent freeze-thaw cycles. |
| Stability: | Shelf life: one year from despatch. |
| Predicted Protein Size: | 60 kDa |
| Gene Name: | WW domain containing adaptor with coiled-coil |
| Database Link: | NP_057712.2 Entrez Gene 51322 Human Q9BTA9-5 |
| Background: | The protein encoded by this gene contains a WW domain, which is a protein module found in a wide range of signaling proteins. This domain mediates protein-protein interactions and binds proteins containing short linear peptide motifs that are proline-rich or contain at least one proline. This gene product shares 94% sequence identity with the WAC protein in mouse, however, its exact function is not known. Alternative splicing results in multiple transcript variants. |
| Synonyms: | 1110067P07Rik; bA48B24; bA48B24.1; BM-016; FLJ31290; KIAA1844; MGC10753; PRO1741; Wwp4 |



[View online »](#)

Product images:



Host: Rabbit
Target Name: WAC
Sample Type: Jurkat Cell Lysate
Antibody Dilution: 1.0 μ g/ml

Host: Rabbit
Target Name: WAC
Sample Tissue: Human Jurkat Whole Cell lysates
Antibody Dilution: 1 ug/ml