

## Product datasheet for **TA362615**

### SynCAM (CADM1) Rabbit Polyclonal Antibody

#### Product data:

Product Type:	Primary Antibodies
Applications:	WB
Reactivity:	Human
Host:	Rabbit
Clonality:	Polyclonal
Immunogen:	The immunogen is a synthetic peptide directed towards the C terminal region of human CADM1
Specificity:	<b>Expected reactivity:</b> Human
Formulation:	Liquid. Purified antibody supplied in 1x PBS buffer with 0.09% (w/v) sodium azide and 2% sucrose. <i>Note that this product is shipped as lyophilized powder to China customers.</i>
Concentration:	lot specific
Purification:	Affinity purified
Conjugation:	Unconjugated
Storage:	For short term use, store at 2-8°C up to 1 week. For long term storage, store at -20°C in small aliquots to prevent freeze-thaw cycles.
Stability:	Shelf life: one year from despatch.
Predicted Protein Size:	45 kDa
Gene Name:	cell adhesion molecule 1
Database Link:	<a href="#">NP_001091987.1</a> <a href="#">Entrez Gene 23705 Human</a> <a href="#">Q9BY67-5</a>



[View online »](#)

**Background:**

Mediates homophilic cell-cell adhesion in a Ca<sup>2+</sup>-independent manner. Also mediates heterophilic cell-cell adhesion with CADM3 and NECTIN3 in a Ca<sup>2+</sup>-independent manner. Acts as a tumor suppressor in non-small-cell lung cancer (NSCLC) cells. Interaction with CRTAM promotes natural killer (NK) cell cytotoxicity and interferon-gamma (IFN-gamma) secretion by CD8<sup>+</sup> cells in vitro as well as NK cell-mediated rejection of tumors expressing CADM3 in vivo. May contribute to the less invasive phenotypes of lepidic growth tumor cells. In mast cells, may mediate attachment to and promote communication with nerves. CADM1, together with MITF, is essential for development and survival of mast cells in vivo. Acts as a synaptic cell adhesion molecule and plays a role in the formation of dendritic spines and in synapse assembly. May be involved in neuronal migration, axon growth, pathfinding, and fasciculation on the axons of differentiating neurons. May play diverse roles in the spermatogenesis including in the adhesion of spermatocytes and spermatids to Sertoli cells and for their normal differentiation into mature spermatozoa.

**Synonyms:**

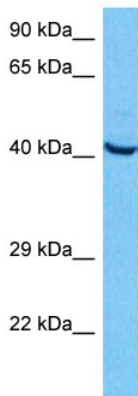
BL2; DKFZp686F1789; IGSF4; IGSF4A; MGC51880; MGC149785; Necl-2; NECL2; RA175; sgIGSF; ST17; sTSLC-1; SYNCAM; synCAM1; TSLC-1; TSLC1

**Protein Families:**

Transmembrane

**Protein Pathways:**

Cell adhesion molecules (CAMs)

**Product images:**

Host: Rabbit  
Target Name: CADM1  
Sample Type: Jurkat Cell Lysate  
Antibody Dilution: 1.0µg/ml

Host: Rabbit  
Target Name: CADM1  
Sample Tissue: Human Jurkat Whole Cell lysates  
Antibody Dilution: 1ug/ml