

Product datasheet for **TA362607**

PICK1 Rabbit Polyclonal Antibody

Product data:

Product Type:	Primary Antibodies
Applications:	WB
Reactivity:	Human
Host:	Rabbit
Clonality:	Polyclonal
Immunogen:	The immunogen is a synthetic peptide directed towards the middle region of human PICK1
Specificity:	Expected reactivity: Human
Formulation:	Liquid. Purified antibody supplied in 1x PBS buffer with 0.09% (w/v) sodium azide and 2% sucrose. <i>Note that this product is shipped as lyophilized powder to China customers.</i>
Concentration:	lot specific
Purification:	Affinity purified
Conjugation:	Unconjugated
Storage:	For short term use, store at 2-8°C up to 1 week. For long term storage, store at -20°C in small aliquots to prevent freeze-thaw cycles.
Stability:	Shelf life: one year from despatch.
Predicted Protein Size:	40 kDa
Gene Name:	protein interacting with PRKCA 1
Database Link:	NP_001034672.1 Entrez Gene 9463 Human Q9NRD5-2



[View online »](#)

Background:

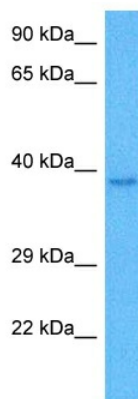
The protein encoded by this gene contains a PDZ domain, through which it interacts with protein kinase C, alpha (PRKCA). This protein may function as an adaptor that binds to and organizes the subcellular localization of a variety of membrane proteins. It has been shown to interact with multiple glutamate receptor subtypes, monoamine plasma membrane transporters, as well as non-voltage gated sodium channels, and may target PRKCA to these membrane proteins and thus regulate their distribution and function. This protein has also been found to act as an anchoring protein that specifically targets PRKCA to mitochondria in a ligand-specific manner. Three transcript variants encoding the same protein have been found for this gene.

Synonyms:

dj1039K5; MGC15204; PICK; PRKCABP

Protein Families:

Druggable Genome

Product images:


Host: Rabbit
Target Name: PICK1
Sample Type: THP-1 Cell Lysate
Antibody Dilution: 1.0µg/ml

Host: Rabbit
Target Name: PICK1
Sample Tissue: Human THP-1 Whole Cell lysates
Antibody Dilution: 1ug/ml