

Product datasheet for **TA362605**

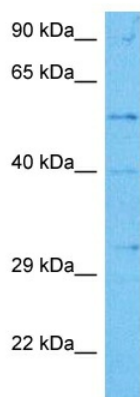
RCC1 Rabbit Polyclonal Antibody

Product data:

Product Type:	Primary Antibodies
Applications:	WB
Reactivity:	Human
Host:	Rabbit
Clonality:	Polyclonal
Immunogen:	The immunogen is a synthetic peptide directed towards the C terminal region of human RCC1
Specificity:	Expected reactivity: Human
Formulation:	Liquid. Purified antibody supplied in 1x PBS buffer with 0.09% (w/v) sodium azide and 2% sucrose. <i>Note that this product is shipped as lyophilized powder to China customers.</i>
Concentration:	lot specific
Purification:	Affinity purified
Conjugation:	Unconjugated
Storage:	For short term use, store at 2-8°C up to 1 week. For long term storage, store at -20°C in small aliquots to prevent freeze-thaw cycles.
Stability:	Shelf life: one year from despatch.
Predicted Protein Size:	49 kDa
Gene Name:	regulator of chromosome condensation 1
Database Link:	NP_001041659.1 Entrez Gene 1104 Human P18754-2
Background:	Guanine-nucleotide releasing factor that promotes the exchange of Ran-bound GDP by GTP. Involved in the regulation of onset of chromosome condensation in the S phase. Binds both to the nucleosomes and double-stranded DNA. RCC1-Ran complex (together with other proteins) acts as a component of a signal transmission pathway that detects unreplicated DNA. Plays a key role in nucleo-cytoplasmic transport, mitosis and nuclear-envelope assembly.
Synonyms:	CHC1; HERC2; OTTHUMP00000003775; RCC1-I; SHEP1



[View online »](#)

Product images:

Host: Rabbit
Target Name: RCC1
Sample Type: HT1080 Cell Lysate
Antibody Dilution: 1.0 μ g/ml

Host: Rabbit
Target Name: RCC1
Sample Tissue: Human HT1080 Whole Cell lysates
Antibody Dilution: 1 μ g/ml