

## Product datasheet for **TA362591**

### Nurim (NRM) Rabbit Polyclonal Antibody

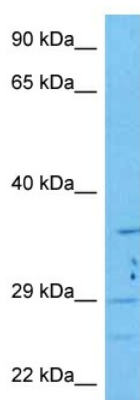
#### Product data:

|                         |                                                                                                                                                                                                                                                                                                                                                            |
|-------------------------|------------------------------------------------------------------------------------------------------------------------------------------------------------------------------------------------------------------------------------------------------------------------------------------------------------------------------------------------------------|
| Product Type:           | Primary Antibodies                                                                                                                                                                                                                                                                                                                                         |
| Applications:           | WB                                                                                                                                                                                                                                                                                                                                                         |
| Reactivity:             | Human                                                                                                                                                                                                                                                                                                                                                      |
| Host:                   | Rabbit                                                                                                                                                                                                                                                                                                                                                     |
| Clonality:              | Polyclonal                                                                                                                                                                                                                                                                                                                                                 |
| Immunogen:              | The immunogen is a synthetic peptide directed towards the C terminal region of human NRM                                                                                                                                                                                                                                                                   |
| Specificity:            | <b>Expected reactivity:</b> Human                                                                                                                                                                                                                                                                                                                          |
| Formulation:            | Liquid. Purified antibody supplied in 1x PBS buffer with 0.09% (w/v) sodium azide and 2% sucrose.                                                                                                                                                                                                                                                          |
| Concentration:          | lot specific                                                                                                                                                                                                                                                                                                                                               |
| Purification:           | Affinity purified                                                                                                                                                                                                                                                                                                                                          |
| Conjugation:            | Unconjugated                                                                                                                                                                                                                                                                                                                                               |
| Storage:                | For short term use, store at 2-8°C up to 1 week. For long term storage, store at -20°C in small aliquots to prevent freeze-thaw cycles.                                                                                                                                                                                                                    |
| Stability:              | Shelf life: one year from despatch.                                                                                                                                                                                                                                                                                                                        |
| Predicted Protein Size: | 28 kDa                                                                                                                                                                                                                                                                                                                                                     |
| Gene Name:              | nurim (nuclear envelope membrane protein)                                                                                                                                                                                                                                                                                                                  |
| Database Link:          | <a href="#">NP_001257636.1</a><br><a href="#">Entrez Gene 11270 Human</a><br><a href="#">Q8IXM6</a>                                                                                                                                                                                                                                                        |
| Background:             | The protein encoded by this gene contains transmembrane domains and resides within the inner nuclear membrane, where it is tightly associated with the nucleus. This protein shares homology with isoprenylcysteine carboxymethyltransferase enzymes. Alternative splicing results in multiple transcript variants that encode different protein isoforms. |
| Synonyms:               | NRM29; nurim; OTTHUMP00000029332                                                                                                                                                                                                                                                                                                                           |
| Protein Families:       | Transmembrane                                                                                                                                                                                                                                                                                                                                              |



[View online »](#)

## Product images:



Host: Rabbit  
Target Name: NRM  
Sample Type: RPMI 8226 Cell Lysate  
Antibody Dilution: 1.0 $\mu$ g/ml

Host: Rabbit  
Target Name: NRM  
Sample Tissue: Human RPMI 8226 Whole Cell lysates  
Antibody Dilution: 1  $\mu$ g/ml