

## Product datasheet for **TA362589**

### **RAD50 Rabbit Polyclonal Antibody**

#### **Product data:**

Product Type:	Primary Antibodies
Applications:	WB
Reactivity:	Human
Host:	Rabbit
Clonality:	Polyclonal
Immunogen:	The immunogen is a synthetic peptide directed towards the middle region of human RAD50
Specificity:	<b>Expected reactivity:</b> Human
Formulation:	Liquid. Purified antibody supplied in 1x PBS buffer with 0.09% (w/v) sodium azide and 2% sucrose. <i>Note that this product is shipped as lyophilized powder to China customers.</i>
Concentration:	lot specific
Purification:	Affinity purified
Conjugation:	Unconjugated
Storage:	For short term use, store at 2-8°C up to 1 week. For long term storage, store at -20°C in small aliquots to prevent freeze-thaw cycles.
Stability:	Shelf life: one year from despatch.
Predicted Protein Size:	129 kDa
Gene Name:	RAD50 double strand break repair protein
Database Link:	<a href="#">NP_005723.2</a> <a href="#">Entrez Gene 10111 Human</a> <a href="#">Q92878-3</a>



[View online »](#)

**Background:**

The protein encoded by this gene is highly similar to *Saccharomyces cerevisiae* Rad50, a protein involved in DNA double-strand break repair. This protein forms a complex with MRE11 and NBS1. The protein complex binds to DNA and displays numerous enzymatic activities that are required for nonhomologous joining of DNA ends. This protein, cooperating with its partners, is important for DNA double-strand break repair, cell cycle checkpoint activation, telomere maintenance, and meiotic recombination. Knockout studies of the mouse homolog suggest this gene is essential for cell growth and viability. Mutations in this gene are the cause of Nijmegen breakage syndrome-like disorder.

**Synonyms:**

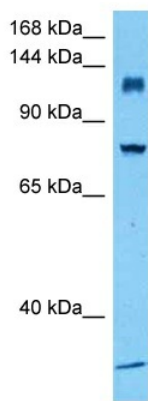
hRad50; NBSLD; RAD50-2

**Protein Families:**

Druggable Genome

**Protein Pathways:**

Homologous recombination, Non-homologous end-joining

**Product images:**

Host: Rabbit  
Target Name: RAD50  
Sample Type: LN18 Cell Lysate  
Antibody Dilution: 1.0µg/ml

Host: Rabbit  
Target Name: RAD50  
Sample Tissue: Human LN18 Whole Cell lysates  
Antibody Dilution: 1ug/ml