

## Product datasheet for **TA362588**

### LYN Rabbit Polyclonal Antibody

#### Product data:

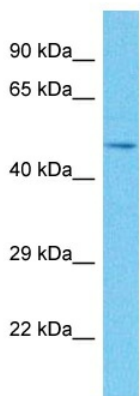
Product Type:	Primary Antibodies
Applications:	WB
Reactivity:	Human
Host:	Rabbit
Clonality:	Polyclonal
Immunogen:	The immunogen is a synthetic peptide directed towards the middle region of human LYN
Specificity:	<b>Expected reactivity:</b> Human
Formulation:	Liquid. Purified antibody supplied in 1x PBS buffer with 0.09% (w/v) sodium azide and 2% sucrose. <i>Note that this product is shipped as lyophilized powder to China customers.</i>
Concentration:	lot specific
Purification:	Affinity purified
Conjugation:	Unconjugated
Storage:	For short term use, store at 2-8°C up to 1 week. For long term storage, store at -20°C in small aliquots to prevent freeze-thaw cycles.
Stability:	Shelf life: one year from despatch.
Predicted Protein Size:	54 kDa
Gene Name:	LYN proto-oncogene, Src family tyrosine kinase
Database Link:	<a href="#">NP_001104567.1</a> <a href="#">Entrez Gene 4067 Human</a> <a href="#">P07948-2</a>
Background:	This gene encodes a tyrosine protein kinase, which maybe involved in the regulation of mast cell degranulation, and erythroid differentiation. Alternatively spliced transcript variants encoding different isoforms have been found for this gene.
Synonyms:	FLJ26625; JTK8
Protein Families:	Druggable Genome, Protein Kinase



[View online »](#)

**Protein Pathways:** B cell receptor signaling pathway, Chemokine signaling pathway, Epithelial cell signaling in Helicobacter pylori infection, Fc epsilon RI signaling pathway, Fc gamma R-mediated phagocytosis, Long-term depression

### Product images:



Host: Rabbit  
Target Name: LYN  
Sample Type: HCT116 Cell Lysate  
Antibody Dilution: 1.0 $\mu$ g/ml

Host: Rabbit  
Target Name: LYN  
Sample Tissue: Human HCT116 Whole Cell lysates  
Antibody Dilution: 1 $\mu$ g/ml