

Product datasheet for **TA362587**

DROSHA Rabbit Polyclonal Antibody

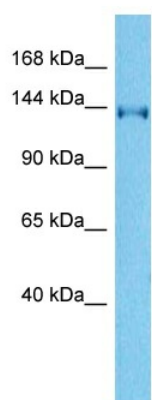
Product data:

Product Type:	Primary Antibodies
Applications:	WB
Reactivity:	Human
Host:	Rabbit
Clonality:	Polyclonal
Immunogen:	The immunogen is a synthetic peptide directed towards the middle region of human DROSHA
Specificity:	Expected reactivity: Human
Formulation:	Liquid. Purified antibody supplied in 1x PBS buffer with 0.09% (w/v) sodium azide and 2% sucrose. <i>Note that this product is shipped as lyophilized powder to China customers.</i>
Concentration:	lot specific
Purification:	Affinity purified
Conjugation:	Unconjugated
Storage:	For short term use, store at 2-8°C up to 1 week. For long term storage, store at -20°C in small aliquots to prevent freeze-thaw cycles.
Stability:	Shelf life: one year from despatch.
Predicted Protein Size:	143 kDa
Gene Name:	drosha ribonuclease III
Database Link:	NP_001093882.1 Entrez Gene 29102 Human Q9NRR4-2
Background:	Members of the ribonuclease III superfamily of double-stranded (ds) RNA-specific endoribonucleases participate in diverse RNA maturation and decay pathways in eukaryotic and prokaryotic cells. The RNase III Drosha is the core nuclease that executes the initiation step of microRNA (miRNA) processing in the nucleus.
Synonyms:	ETOHI2; HSA242976; RANSE3L; RN3; RNASE3L; RNASEN



[View online »](#)

Product images:



Host: Rabbit
Target Name: DROSHA
Sample Type: 293T Cell Lysate
Antibody Dilution: 1.0 μ g/ml

Host: Rabbit
Target Name: DROSHA
Sample Tissue: Human 293T Whole Cell lysates
Antibody Dilution: 1 μ g/ml