

Product datasheet for **TA362585**

Presenilin 1 (PSEN1) Rabbit Polyclonal Antibody

Product data:

Product Type:	Primary Antibodies
Applications:	WB
Reactivity:	Human
Host:	Rabbit
Clonality:	Polyclonal
Immunogen:	The immunogen is a synthetic peptide directed towards the N terminal region of human PSEN1
Specificity:	Expected reactivity: Human
Formulation:	Liquid. Purified antibody supplied in 1x PBS buffer with 0.09% (w/v) sodium azide and 2% sucrose. <i>Note that this product is shipped as lyophilized powder to China customers.</i>
Concentration:	lot specific
Purification:	Affinity purified
Conjugation:	Unconjugated
Storage:	For short term use, store at 2-8°C up to 1 week. For long term storage, store at -20°C in small aliquots to prevent freeze-thaw cycles.
Stability:	Shelf life: one year from despatch.
Predicted Protein Size:	53 kDa
Gene Name:	presenilin 1
Database Link:	NP_000012.1 Entrez Gene 5663 Human P49768



[View online »](#)

Background:

Alzheimer's disease (AD) patients with an inherited form of the disease carry mutations in the presenilin proteins (PSEN1; PSEN2) or in the amyloid precursor protein (APP). These disease-linked mutations result in increased production of the longer form of amyloid-beta (main component of amyloid deposits found in AD brains). Presenilins are postulated to regulate APP processing through their effects on gamma-secretase, an enzyme that cleaves APP. Also, it is thought that the presenilins are involved in the cleavage of the Notch receptor, such that they either directly regulate gamma-secretase activity or themselves are protease enzymes. Several alternatively spliced transcript variants encoding different isoforms have been identified for this gene, the full-length nature of only some have been determined.Â

Synonyms:

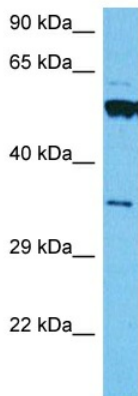
AD3; FAD; OTTHUMP00000180589; PS-1; PS1; PSNL1; S182

Protein Families:

Druggable Genome, Protease, Transmembrane

Protein Pathways:

Alzheimer's disease, Neurotrophin signaling pathway, Notch signaling pathway, Wnt signaling pathway

Product images:


Host: Rabbit
 Target Name: PSEN1
 Sample Type: HCT116 Cell Lysate
 Antibody Dilution: 1.0µg/ml

Host: Rabbit
 Target Name: PSEN1
 Sample Tissue: Human HCT116 Whole Cell lysates
 Antibody Dilution: 1ug/ml