

## Product datasheet for **TA362580**

### PPP1A (PPP1CA) Rabbit Polyclonal Antibody

#### Product data:

|                         |   |
|-------------------------|---|
| Product Type:           | Primary Antibodies  |
| Applications:           | WB  |
| Reactivity:             | Human   |
| Host:                   | Rabbit  |
| Clonality:              | Polyclonal  |
| Immunogen:              | The immunogen is a synthetic peptide directed towards the C terminal region of human PPP1CA   |
| Specificity:            | <b>Expected reactivity:</b> Human   |
| Formulation:            | Liquid. Purified antibody supplied in 1x PBS buffer with 0.09% (w/v) sodium azide and 2% sucrose.<br><i>Note that this product is shipped as lyophilized powder to China customers.</i> |
| Concentration:          | lot specific  |
| Purification:           | Affinity purified   |
| Conjugation:            | Unconjugated  |
| Storage:                | For short term use, store at 2-8°C up to 1 week. For long term storage, store at -20°C in small aliquots to prevent freeze-thaw cycles.   |
| Stability:              | Shelf life: one year from despatch.   |
| Predicted Protein Size: | 37 kDa  |
| Gene Name:              | protein phosphatase 1 catalytic subunit alpha   |
| Database Link:          | <a href="#">NP_001008709.1</a><br><a href="#">Entrez Gene 5499 Human</a><br><a href="#">P62136-2</a>  |



[View online »](#)

**Background:**

The protein encoded by this gene is one of the three catalytic subunits of protein phosphatase 1 (PP1). PP1 is a serine/threonine specific protein phosphatase known to be involved in the regulation of a variety of cellular processes, such as cell division, glycogen metabolism, muscle contractility, protein synthesis, and HIV-1 viral transcription. Increased PP1 activity has been observed in the end stage of heart failure. Studies in both human and mice suggest that PP1 is an important regulator of cardiac function. Mouse studies also suggest that PP1 functions as a suppressor of learning and memory. Three alternatively spliced transcript variants encoding different isoforms have been found for this gene.

**Synonyms:**

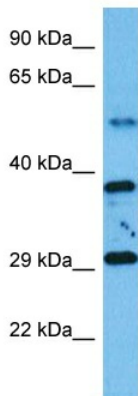
MGC1674; MGC15877; PP-1A; PP1A; PPP1A

**Protein Families:**

Druggable Genome, Phosphatase

**Protein Pathways:**

Focal adhesion, Insulin signaling pathway, Long-term potentiation, Oocyte meiosis, Regulation of actin cytoskeleton, Vascular smooth muscle contraction

**Product images:**

Host: Rabbit  
Target Name: PPP1CA  
Sample Type: HCT116 Cell Lysate  
Antibody Dilution: 1.0 $\mu$ g/ml

Host: Rabbit  
Target Name: PPP1CA  
Sample Tissue: Human HCT116 Whole Cell lysates  
Antibody Dilution: 1 $\mu$ g/ml