

Product datasheet for **TA362570**

MCT2 (SLC16A7) Rabbit Polyclonal Antibody

Product data:

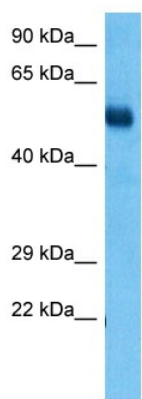
Product Type:	Primary Antibodies
Applications:	WB
Reactivity:	Human
Host:	Rabbit
Clonality:	Polyclonal
Immunogen:	The immunogen is a synthetic peptide directed towards the middle region of human SLC16A7
Specificity:	Expected reactivity: Human
Formulation:	Liquid. Purified antibody supplied in 1x PBS buffer with 0.09% (w/v) sodium azide and 2% sucrose. <i>Note that this product is shipped as lyophilized powder to China customers.</i>
Concentration:	lot specific
Purification:	Affinity purified
Conjugation:	Unconjugated
Storage:	For short term use, store at 2-8°C up to 1 week. For long term storage, store at -20°C in small aliquots to prevent freeze-thaw cycles.
Stability:	Shelf life: one year from despatch.
Predicted Protein Size:	52 kDa
Gene Name:	solute carrier family 16 member 7
Database Link:	NP_001257551.1 Entrez Gene 9194 Human O60669
Background:	This gene is a member of the monocarboxylate transporter family. Members in this family transport metabolites, such as lactate, pyruvate, and ketone bodies. The protein encoded by this gene catalyzes the proton-linked transport of monocarboxylates and has the highest affinity for pyruvate. This protein has been reported to be more highly expressed in prostate and colorectal cancer specimens when compared to control specimens. Alternative splicing results in multiple transcript variants.
Synonyms:	MCT2



[View online »](#)

Protein Families: Transmembrane

Product images:



Host: Rabbit
Target Name: SLC16A7
Sample Type: Mesenchymoma Tumor Lysate
Antibody Dilution: 1.0 µg/ml

Host: Rabbit
Target Name: SLC16A7
Sample Tissue: Human Mesenchymoma Tumor lysates
Antibody Dilution: 1 µg/ml