

## Product datasheet for **TA362566**

### Suppressor of Fused (SUFU) Rabbit Polyclonal Antibody

#### Product data:

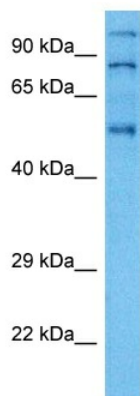
Product Type:	Primary Antibodies
Applications:	WB
Reactivity:	Human
Host:	Rabbit
Clonality:	Polyclonal
Immunogen:	The immunogen is a synthetic peptide directed towards the middle region of human SUFU
Specificity:	<b>Expected reactivity:</b> Human
Formulation:	Liquid. Purified antibody supplied in 1x PBS buffer with 0.09% (w/v) sodium azide and 2% sucrose. <i>Note that this product is shipped as lyophilized powder to China customers.</i>
Concentration:	lot specific
Purification:	Affinity purified
Conjugation:	Unconjugated
Storage:	For short term use, store at 2-8°C up to 1 week. For long term storage, store at -20°C in small aliquots to prevent freeze-thaw cycles.
Stability:	Shelf life: one year from despatch.
Predicted Protein Size:	53 kDa
Gene Name:	SUFU negative regulator of hedgehog signaling
Database Link:	<a href="#">NP_001171604.1</a> <a href="#">Entrez Gene 51684 Human</a> <a href="#">Q9UMX1</a>
Background:	The Hedgehog signaling pathway plays an important role in early human development. The pathway is a signaling cascade that plays a role in pattern formation and cellular proliferation during development. This gene encodes a negative regulator of the hedgehog signaling pathway. Defects in this gene are a cause of medulloblastoma. Alternative splicing results in multiple transcript variants.
Synonyms:	PRO1280; SUFUH; SUFUXL
Protein Families:	Druggable Genome, Transcription Factors



[View online »](#)

Protein Pathways: Basal cell carcinoma, Hedgehog signaling pathway, Pathways in cancer

### Product images:



Host: Rabbit  
Target Name: SUFU  
Sample Type: HCT116 Cell Lysate  
Antibody Dilution: 1.0 $\mu$ g/ml

Host: Rabbit  
Target Name: SUFU  
Sample Tissue: Human HCT116 Whole Cell lysates  
Antibody Dilution: 1 $\mu$ g/ml